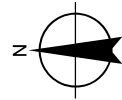
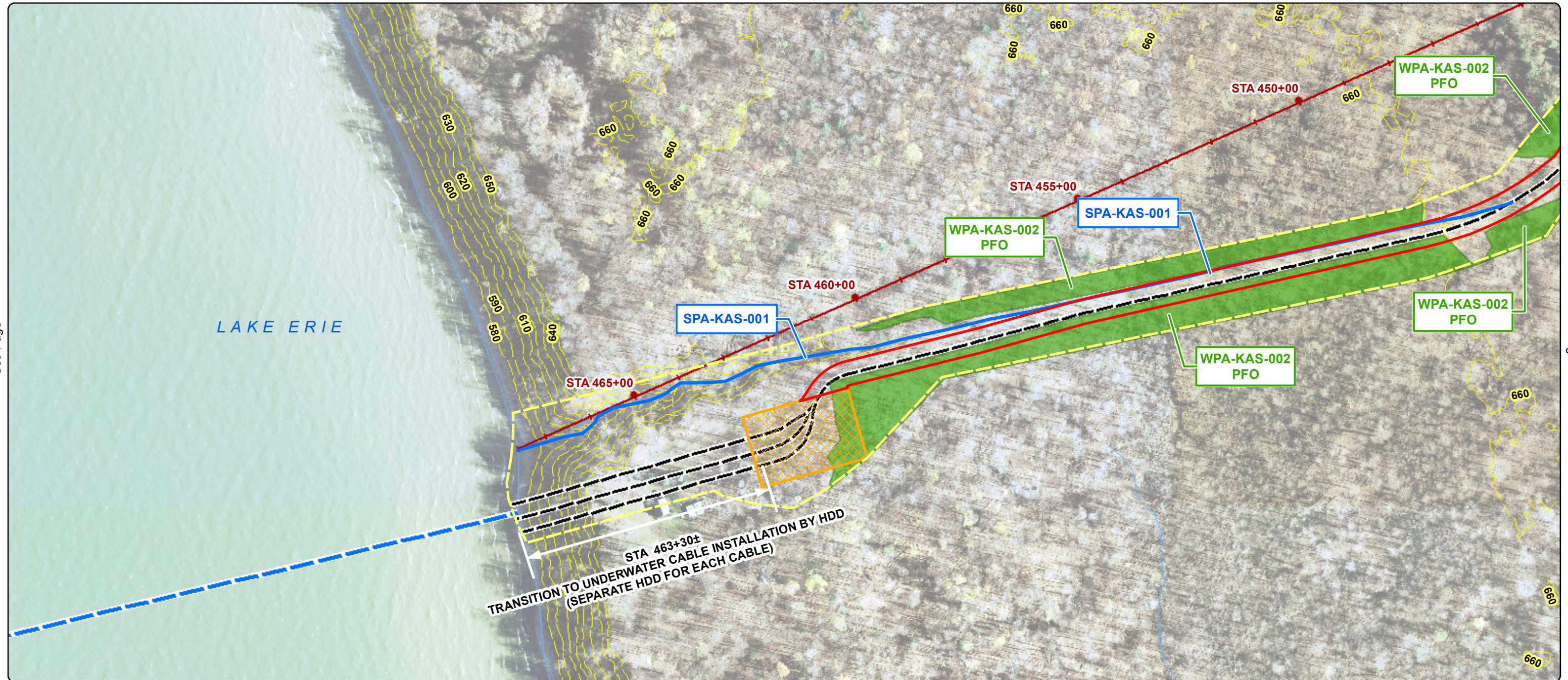


APPENDIX A

ITC LAKE ERIE CONNECTOR: UNDERGROUND SEGMENT ALIGNMENT MAPS



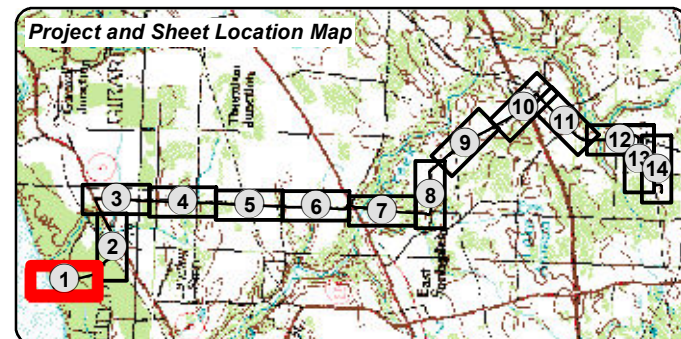
See Page



See Page

See Page 2

See Page



- Proposed Underground Cable Route
- Proposed AC Cable Route
- Proposed Underwater Cable Route
- Cable Route LOD
- Construction Laydown LOD
- Proposed Converter Station Site

- Wetlands**
- PUB
 - PSS
 - PFO
 - PEM

- Env. Field Survey Corridor**
- Wetland Shovel Test**
- Upland
 - Wetland
 - River | Stream
 - Pond

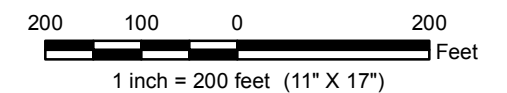
- US Highway
- US Route
- State Route
- Local Road
- Railroad
- PASDA River | Stream
- Contour (10ft.)

Map information was compiled from the best available public sources. No warranty is made for its accuracy and completeness.

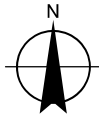
Document Path: N:\GIS2\Projects\Lake_Erie_Power_Corporation\211948_SubseaCable_SM_Task1\Map_Docs\Final\Environmental_Reports\Wetland_Waterbodies\LEPC_Appendix_A_EA_Alignment_Map_20160114.mxd

**ALIGNMENT MAPS
ERIE COUNTY, PENNSYLVANIA**

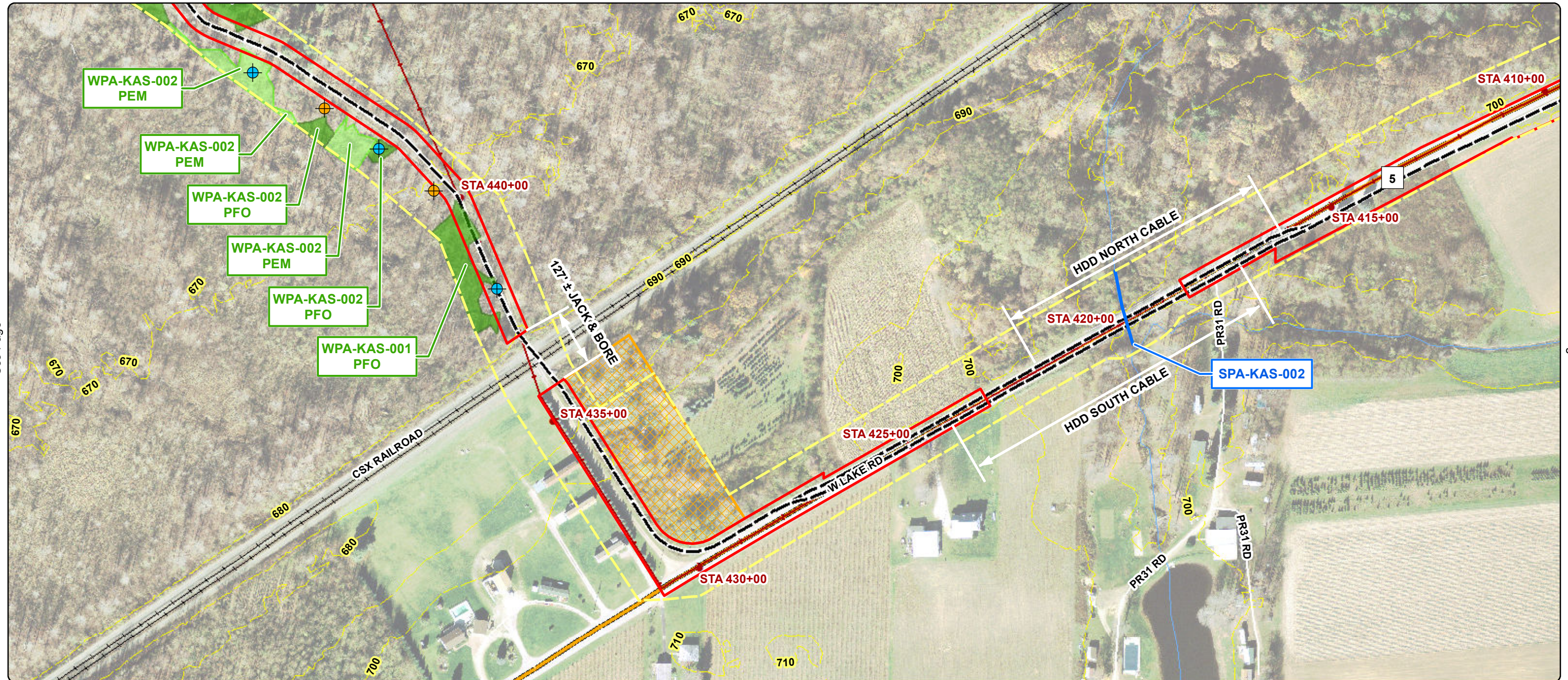
Page 1 of 14



Prepared by: HDR Engineering, Inc. | January 2016



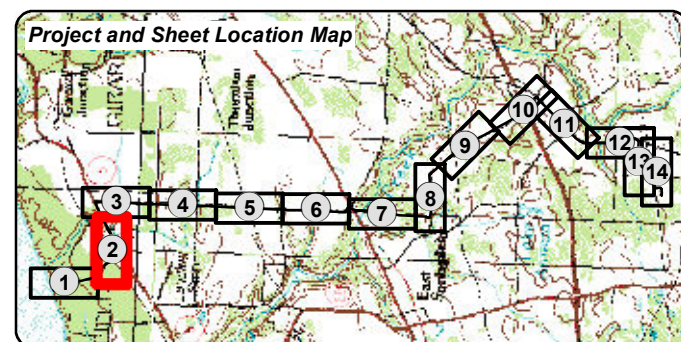
See Page 1



See Page

See Page 3

See Page



- Proposed Underground Cable Route
- Proposed AC Cable Route
- Proposed Underwater Cable Route
- Cable Route LOD
- Construction Laydown LOD
- Proposed Converter Station Site

- Wetlands**
- PUB
 - PSS
 - PFO
 - PEM

- Env. Field Survey Corridor**
- Wetland Shovel Test**
- Upland
 - Wetland
 - River | Stream
 - Pond

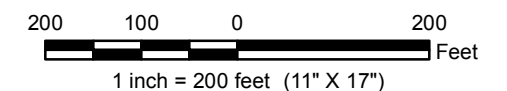
- US Highway
- US Route
- State Route
- Local Road
- Railroad
- PASDA River | Stream
- Contour (10ft.)

Map information was compiled from the best available public sources. No warranty is made for its accuracy and completeness.

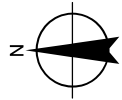
Document Path: N:\GIS2\Projects\Lake_Erie_Power_Corporation\211948_SubseaCable_SM_Task1\Map_Docs\Final\Environmental_Reports\Wetland_Waterbodies\LEPC_Appendix_A_EA_Alignment_Map_20160114.mxd

**ALIGNMENT MAPS
ERIE COUNTY, PENNSYLVANIA**

Page 2 of 14



Prepared by: HDR Engineering, Inc. | January 2016



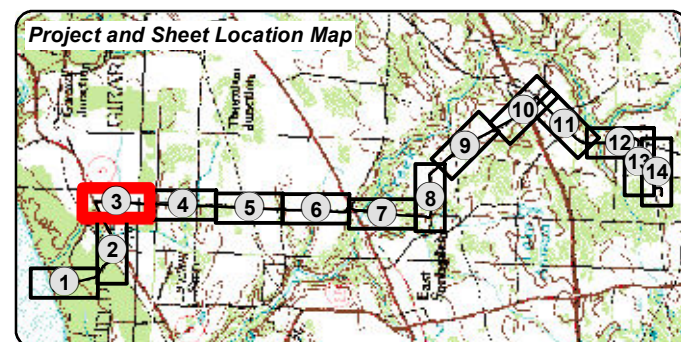
See Page



See Page

See Page 4

See Page 2



- Proposed Underground Cable Route
- Proposed AC Cable Route
- Proposed Underwater Cable Route
- Cable Route LOD
- Construction Laydown LOD
- Proposed Converter Station Site

- Wetlands**
- PUB
 - PSS
 - PFO
 - PEM

- Env. Field Survey Corridor**
- Wetland Shovel Test**
- Upland
 - Wetland
 - River | Stream
 - Pond

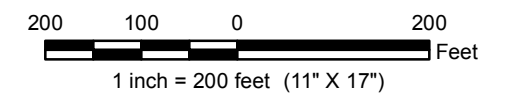
- US Highway
- US Route
- State Route
- Local Road
- Railroad
- PASDA River | Stream
- Contour (10ft.)

Map information was compiled from the best available public sources. No warranty is made for its accuracy and completeness.

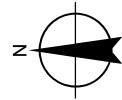
Document Path: N:\GIS2\Projects\Lake_Erie_Power_Corporation\211948_SubseaCable_SM_Task1\Map_Docs\Final\Environmental_Reports\Wetland_Waterbodies\LEPC_Appendix_A_EA_Alignment_Map_20160114.mxd

**ALIGNMENT MAPS
ERIE COUNTY, PENNSYLVANIA**

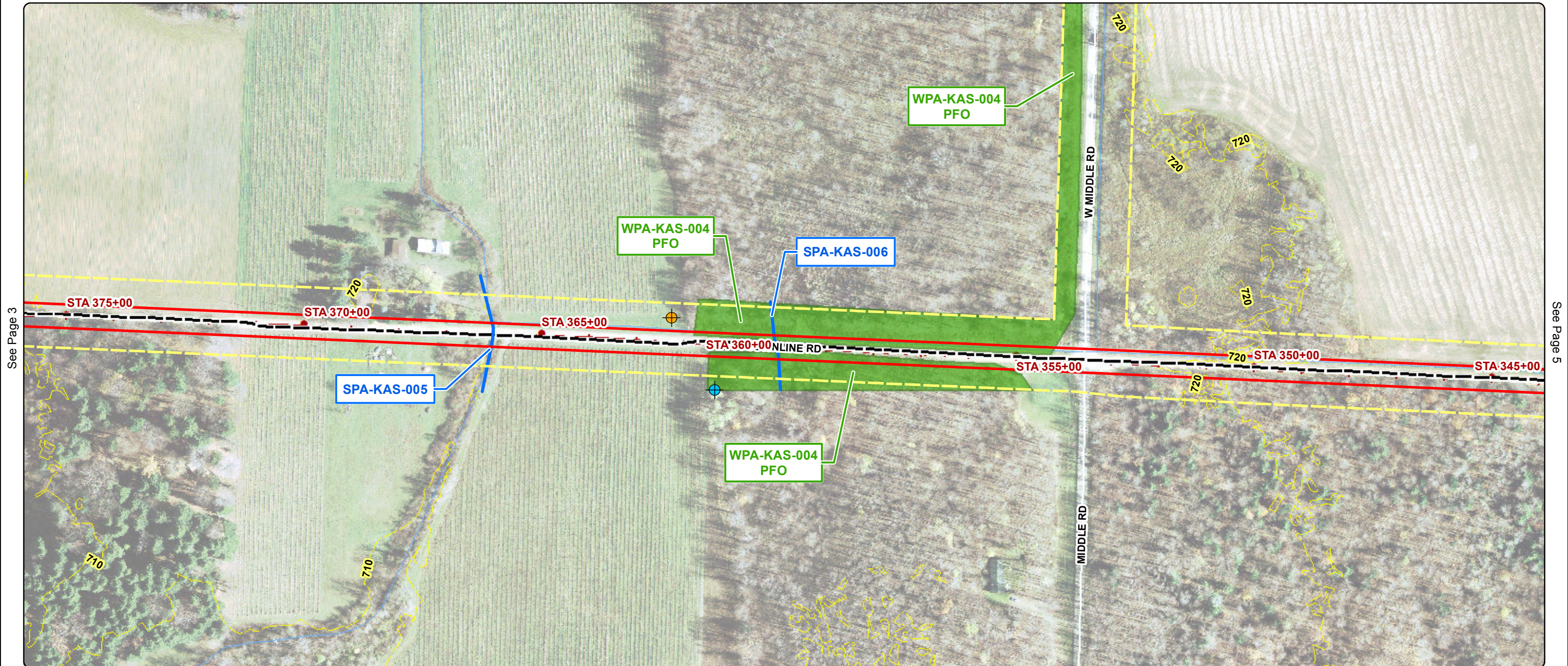
Page 3 of 14



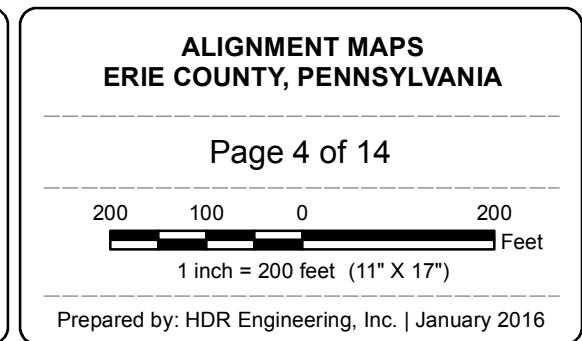
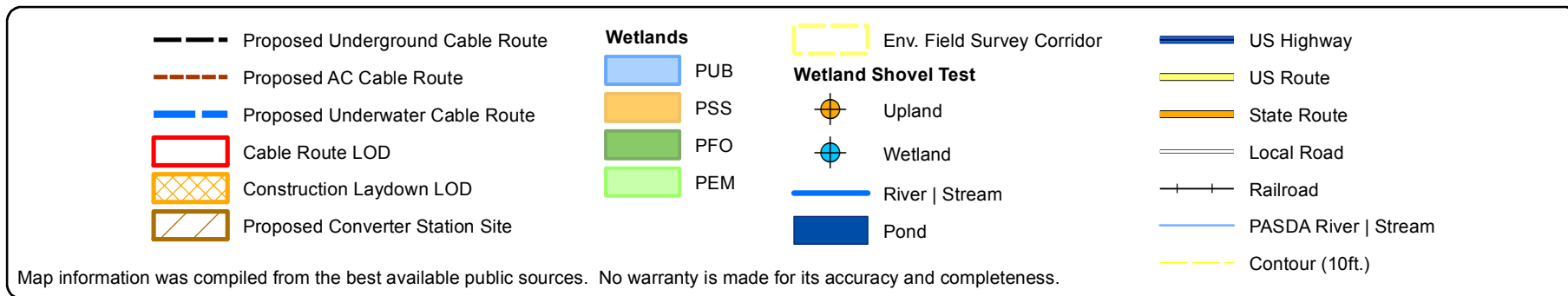
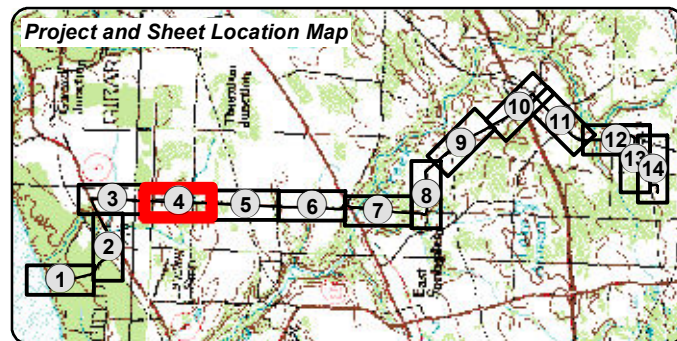
Prepared by: HDR Engineering, Inc. | January 2016

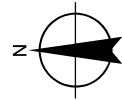


See Page

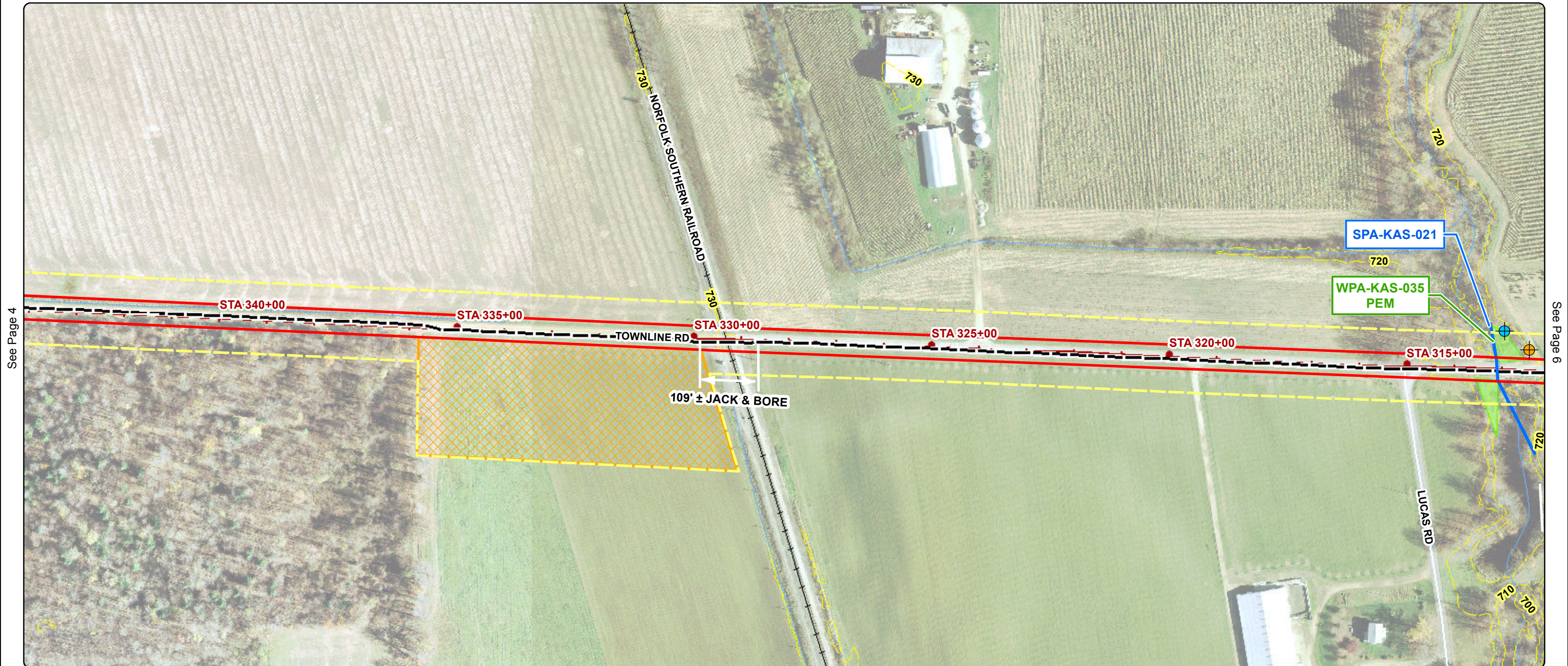


See Page





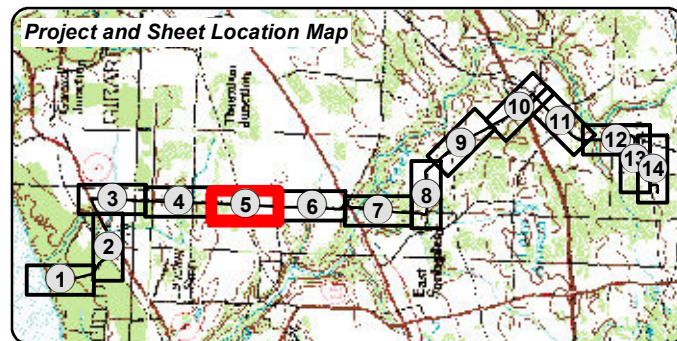
See Page



See Page 4

See Page 6

See Page



- Proposed Underground Cable Route
- Proposed AC Cable Route
- Proposed Underwater Cable Route
- Cable Route LOD
- Construction Laydown LOD
- Proposed Converter Station Site

- Wetlands**
- PUB
 - PSS
 - PFO
 - PEM

- Env. Field Survey Corridor**
- Wetland Shovel Test**
- Upland
 - Wetland
 - River | Stream
 - Pond

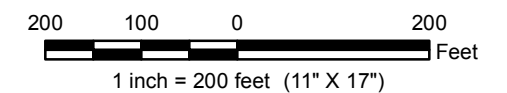
- US Highway
- US Route
- State Route
- Local Road
- Railroad
- PASDA River | Stream
- Contour (10ft.)

Map information was compiled from the best available public sources. No warranty is made for its accuracy and completeness.

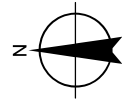
Document Path: N:\GIS2\Projects\Lake_Erie_Power_Corporation\211948_SubseaCable_SM_Task1\Map_Docs\Final\Environmental_Reports\Wetland_Waterbodies\LEPC_Appendix_A_EA_Alignment_Map_20160114.mxd

**ALIGNMENT MAPS
ERIE COUNTY, PENNSYLVANIA**

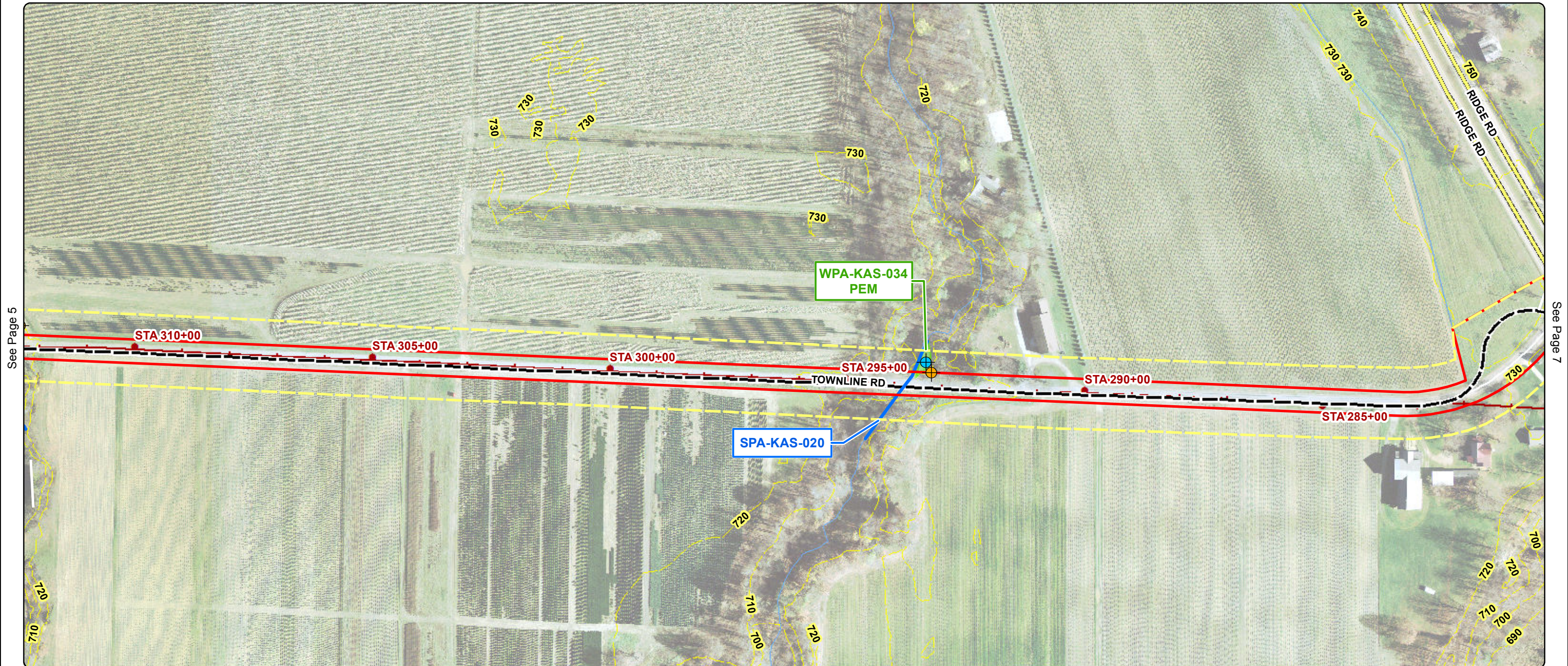
Page 5 of 14



Prepared by: HDR Engineering, Inc. | January 2016



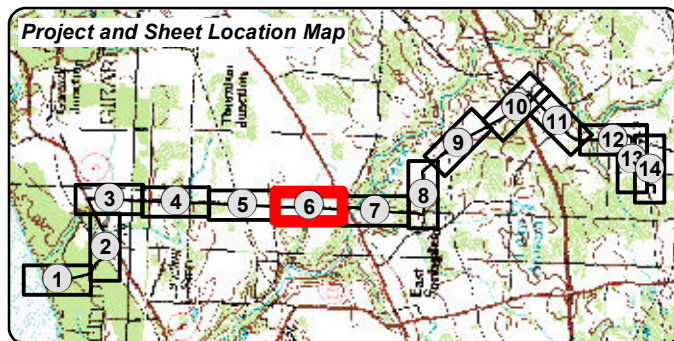
See Page



See Page 5

See Page 7

See Page



- Proposed Underground Cable Route
- Proposed AC Cable Route
- Proposed Underwater Cable Route
- Cable Route LOD
- Construction Laydown LOD
- Proposed Converter Station Site

- Wetlands**
- PUB
 - PSS
 - PFO
 - PEM

- Env. Field Survey Corridor**
- Wetland Shovel Test**
- Upland
 - Wetland
 - River | Stream
 - Pond

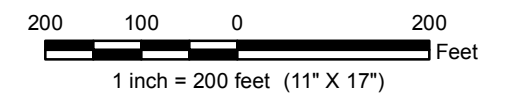
- US Highway
- US Route
- State Route
- Local Road
- Railroad
- PASDA River | Stream
- Contour (10ft.)

Map information was compiled from the best available public sources. No warranty is made for its accuracy and completeness.

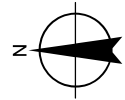
Document Path: N:\GIS2\Projects\Lake_Erie_Power_Corporation\211948_SubseaCable_SM_Task1\Map_Docs\Final\Environmental_Reports\Wetland_Waterbodies\LEPC_Appendix_A_EA_Alignment_Map_20160114.mxd

**ALIGNMENT MAPS
ERIE COUNTY, PENNSYLVANIA**

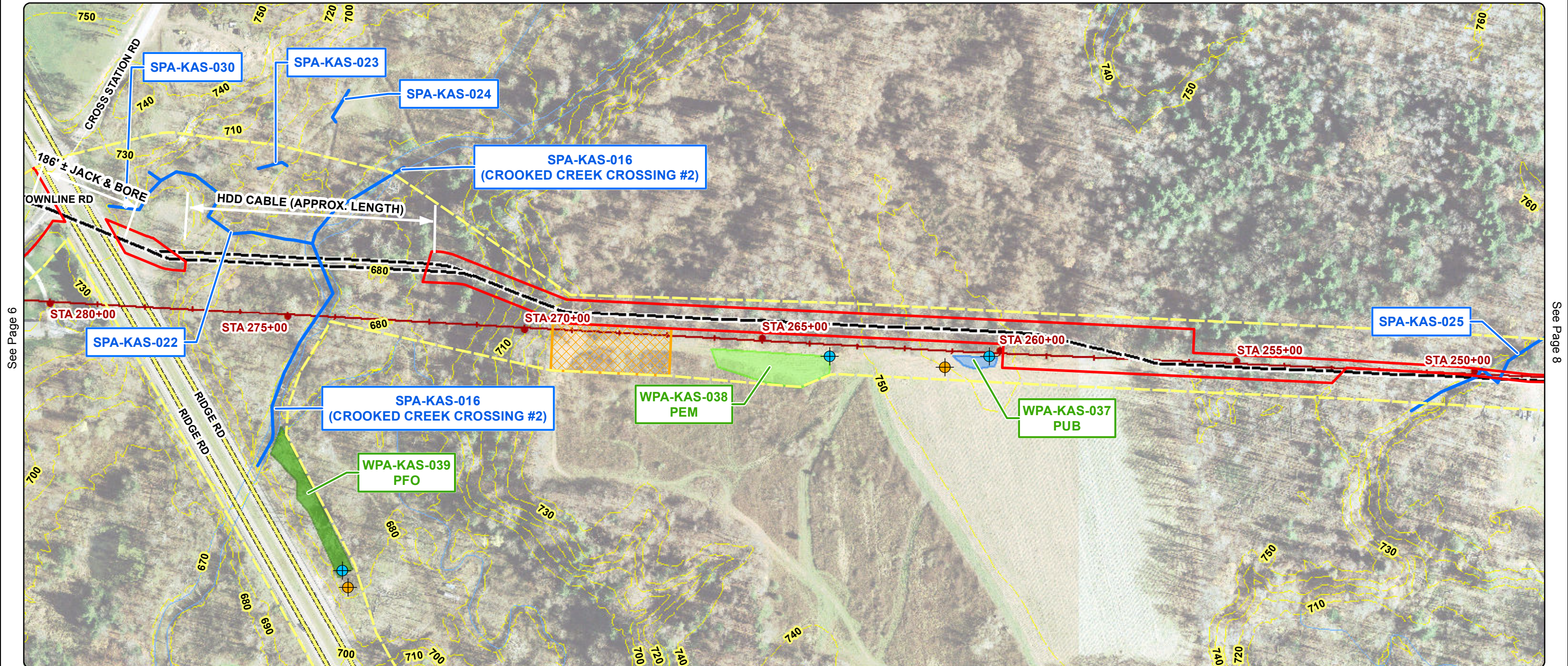
Page 6 of 14



Prepared by: HDR Engineering, Inc. | January 2016



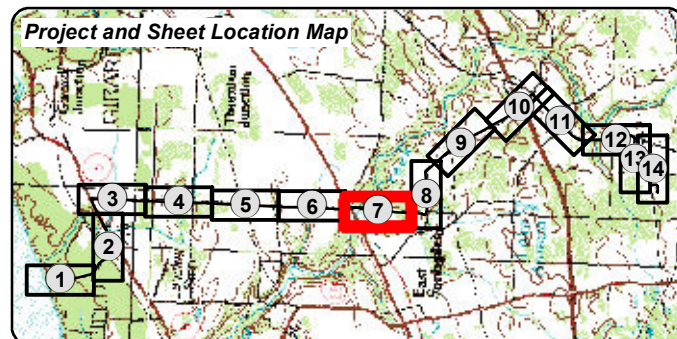
See Page



See Page 6

See Page 8

See Page 0



- Proposed Underground Cable Route
- Proposed AC Cable Route
- Proposed Underwater Cable Route
- Cable Route LOD
- Construction Laydown LOD
- Proposed Converter Station Site

- Wetlands**
- PUB
 - PSS
 - PFO
 - PEM

- Env. Field Survey Corridor**
- Wetland Shovel Test**
- Upland
 - Wetland
 - River | Stream
 - Pond

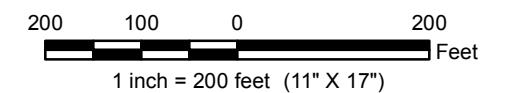
- US Highway
- US Route
- State Route
- Local Road
- Railroad
- PASDA River | Stream
- Contour (10ft.)

Map information was compiled from the best available public sources. No warranty is made for its accuracy and completeness.

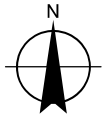
Document Path: N:\GIS2\Projects\Lake_Erie_Power_Corporation\211948_SubseaCable_SM_Task1\Map_Docs\Final\Environmental_Reports\Wetland_Waterbodies\LEPC_Appendix_A_EA_Alignment_Map_20160114.mxd

**ALIGNMENT MAPS
ERIE COUNTY, PENNSYLVANIA**

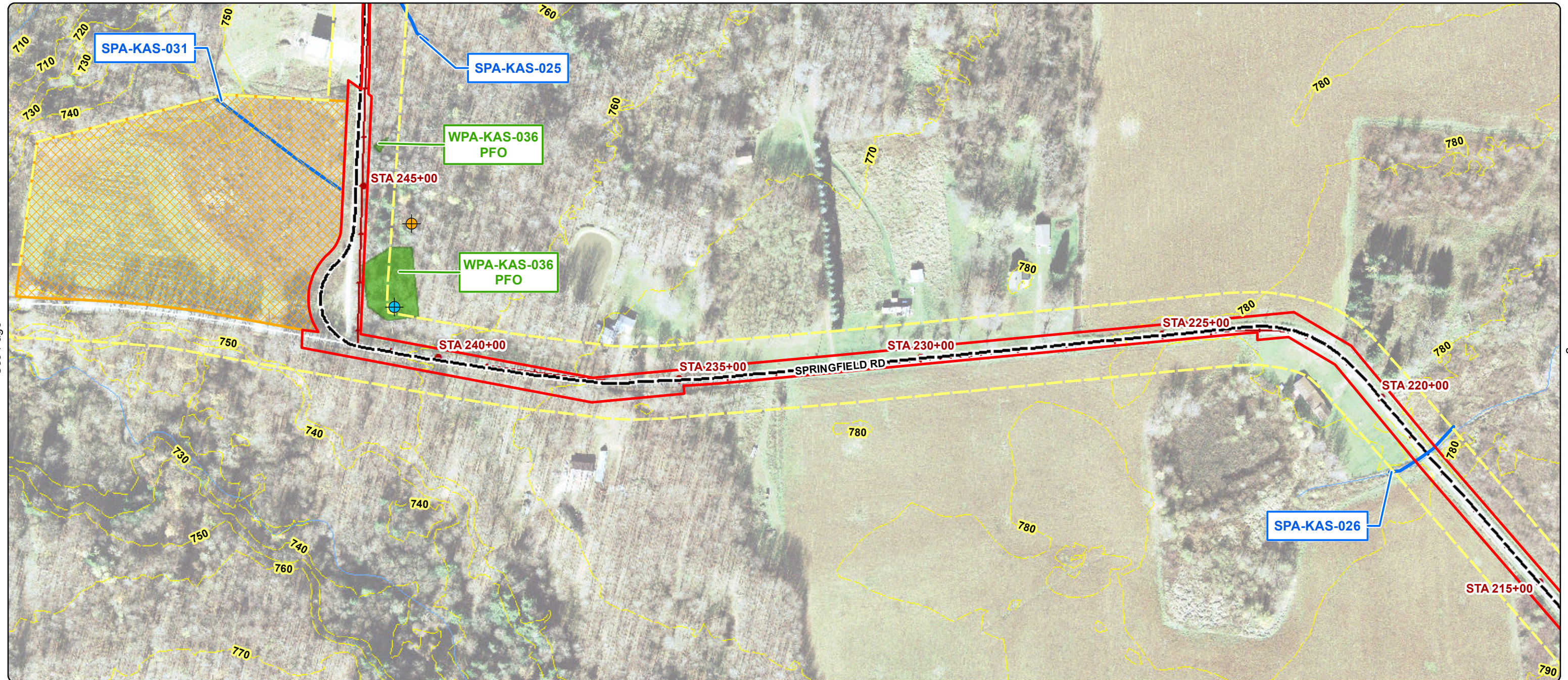
Page 7 of 14



Prepared by: HDR Engineering, Inc. | January 2016



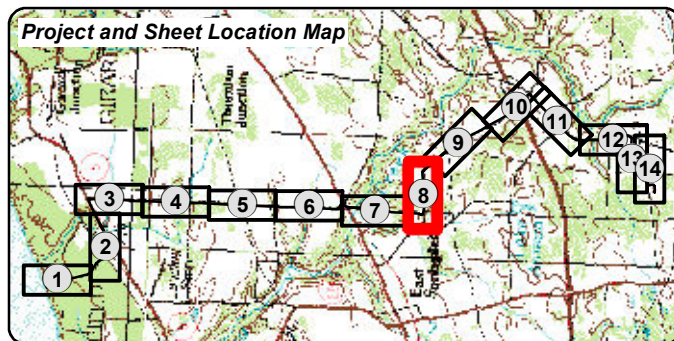
See Page 7



See Page

See Page 9

See Page



- Proposed Underground Cable Route
- Proposed AC Cable Route
- Proposed Underwater Cable Route
- Cable Route LOD
- Construction Laydown LOD
- Proposed Converter Station Site

- Wetlands**
- PUB
 - PSS
 - PFO
 - PEM

- Env. Field Survey Corridor**
- Wetland Shovel Test**
- Upland
 - Wetland
 - River | Stream
 - Pond

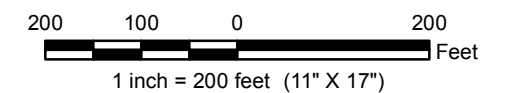
- US Highway
- US Route
- State Route
- Local Road
- Railroad
- PASDA River | Stream
- Contour (10ft.)

Map information was compiled from the best available public sources. No warranty is made for its accuracy and completeness.

Document Path: N:\GIS2\Projects\Lake_Erie_Power_Corporation\211948_SubseaCable_SM_Task1\Map_Docs\Final\Environmental_Reports\Wetland_Waterbodies\LEPC_Appendix_A_EA_Alignment_Map_20160114.mxd

**ALIGNMENT MAPS
ERIE COUNTY, PENNSYLVANIA**

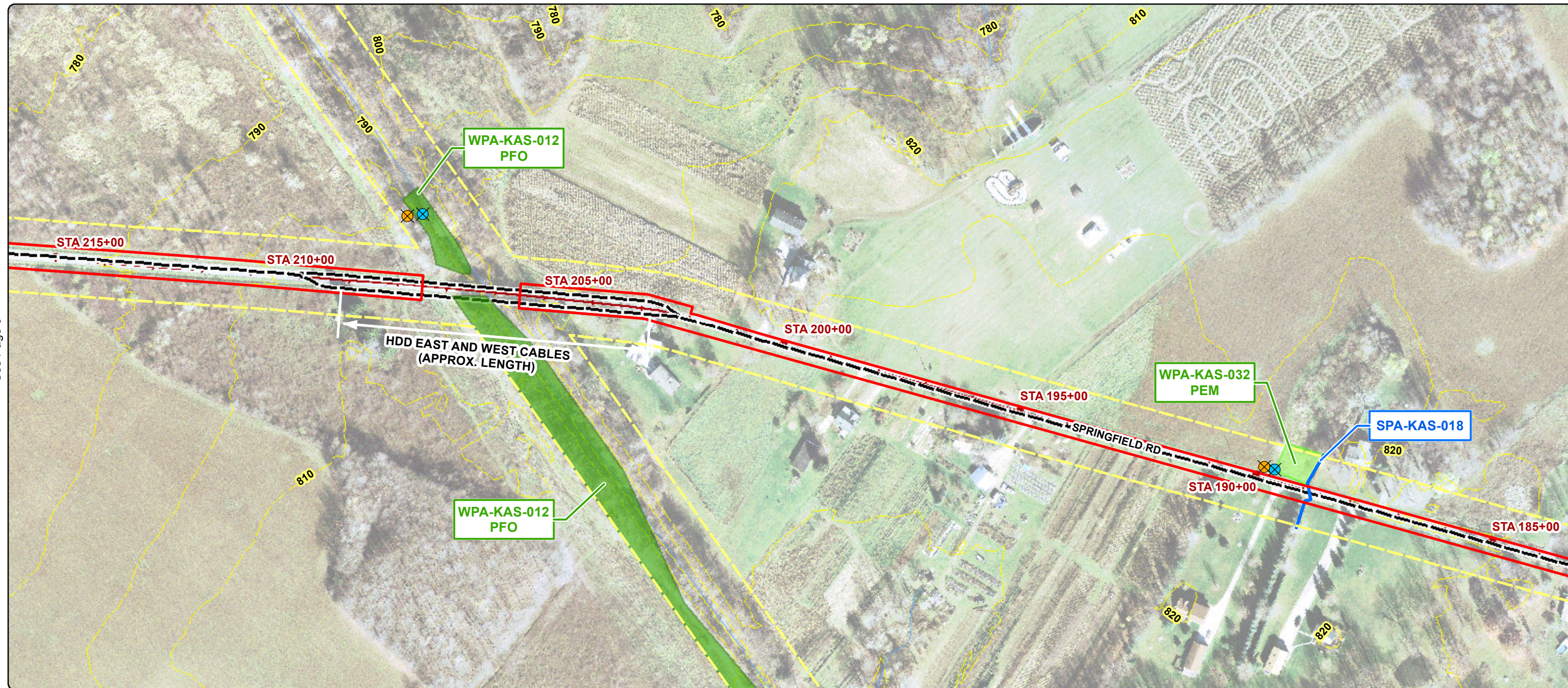
Page 8 of 14



Prepared by: HDR Engineering, Inc. | January 2016



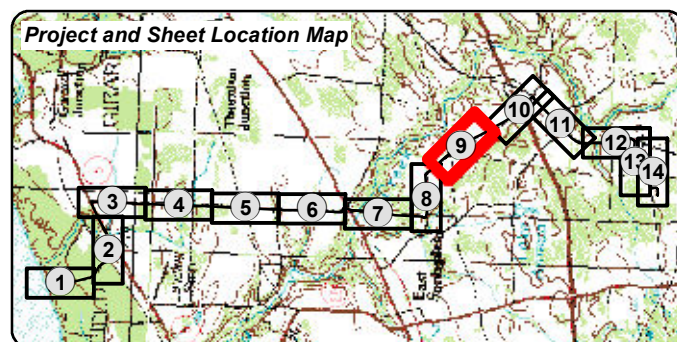
See Page



See Page 8

See Page 10

See Page



- Proposed Underground Cable Route
- Proposed AC Cable Route
- Proposed Underwater Cable Route
- Cable Route LOD
- Construction Laydown LOD
- Proposed Converter Station Site

- Wetlands**
- PUB
 - PSS
 - PFO
 - PEM

- Env. Field Survey Corridor**
- Wetland Shovel Test**
- Upland
 - Wetland
 - River | Stream
 - Pond

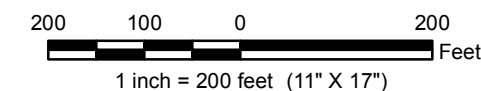
- US Highway
- US Route
- State Route
- Local Road
- Railroad
- PASDA River | Stream
- Contour (10ft.)

Map information was compiled from the best available public sources. No warranty is made for its accuracy and completeness.

Document Path: N:\GIS2\Projects\Lake_Erie_Power_Corporation\211948_SubseaCable_SM_Task1\Map_Docs\Final\Environmental_Reports\Wetland_Waterbodies\LEPC_Appendix_A_EA_Alignment_Map_20160114.mxd

**ALIGNMENT MAPS
ERIE COUNTY, PENNSYLVANIA**

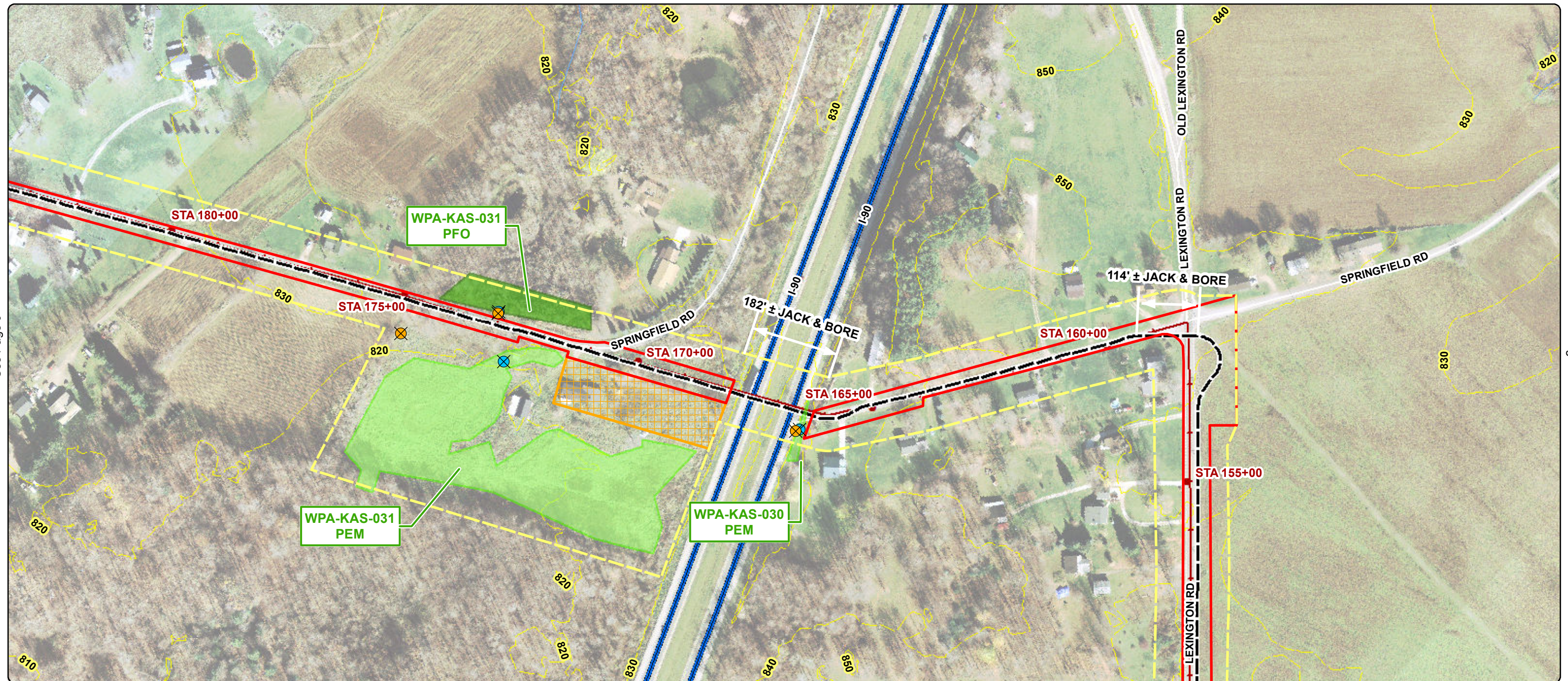
Page 9 of 14



Prepared by: HDR Engineering, Inc. | January 2016



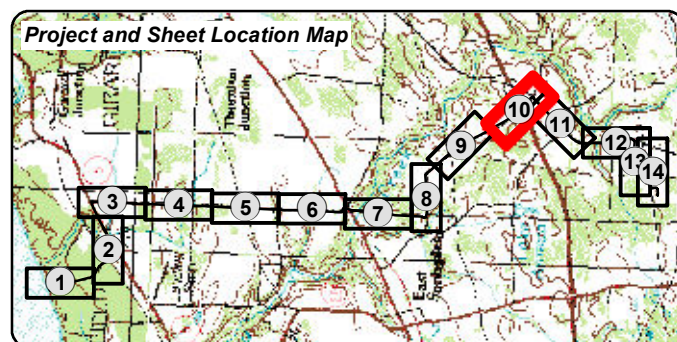
See Page



See Page 9

See Page

See Page 11



- Proposed Underground Cable Route
- Proposed AC Cable Route
- Proposed Underwater Cable Route
- Cable Route LOD
- Construction Laydown LOD
- Proposed Converter Station Site

- Wetlands**
- PUB
 - PSS
 - PFO
 - PEM

- Env. Field Survey Corridor**
- Wetland Shovel Test**
- Upland
 - Wetland
 - River | Stream
 - Pond

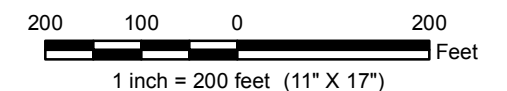
- US Highway
- US Route
- State Route
- Local Road
- Railroad
- PASDA River | Stream
- Contour (10ft.)

Map information was compiled from the best available public sources. No warranty is made for its accuracy and completeness.

Document Path: N:\GIS2\Projects\Lake_Erie_Power_Corporation\211948_SubseaCable_SM_Task1\Map_Docs\Final\Environmental_Reports\Wetland_Waterbodies\LEPC_Appendix_A_EA_Alignment_Map_20160114.mxd

**ALIGNMENT MAPS
ERIE COUNTY, PENNSYLVANIA**

Page 10 of 14



Prepared by: HDR Engineering, Inc. | January 2016



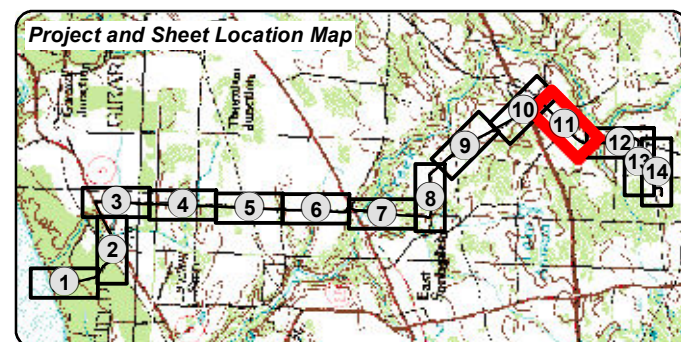
See Page



See Page 10

See Page 12

See Page



- Proposed Underground Cable Route
- Proposed AC Cable Route
- Proposed Underwater Cable Route
- Cable Route LOD
- Construction Laydown LOD
- Proposed Converter Station Site

- Wetlands**
- PUB
 - PSS
 - PFO
 - PEM

- Env. Field Survey Corridor**
- Wetland Shovel Test**
- Upland
 - Wetland
 - River | Stream
 - Pond

- US Highway
- US Route
- State Route
- Local Road
- Railroad
- PASDA River | Stream
- Contour (10ft.)

Map information was compiled from the best available public sources. No warranty is made for its accuracy and completeness.

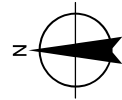
Document Path: N:\GIS2\Projects\Lake_Erie_Power_Corporation\211948_SubseaCable_SM_Task1\Map_Docs\Final\Environmental_Reports\Wetland_Waterbodies\LEPC_Appendix_A_EA_Alignment_Map_20160114.mxd

**ALIGNMENT MAPS
ERIE COUNTY, PENNSYLVANIA**

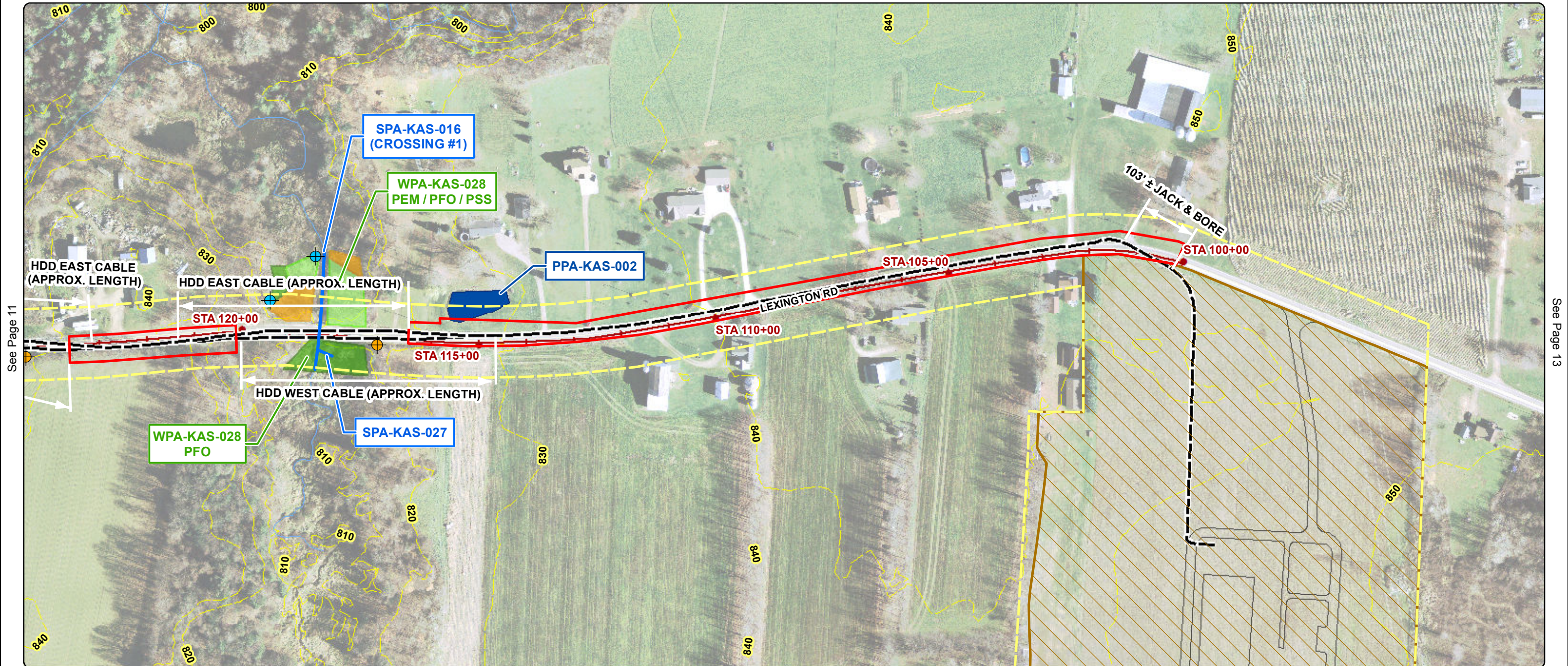
Page 11 of 14



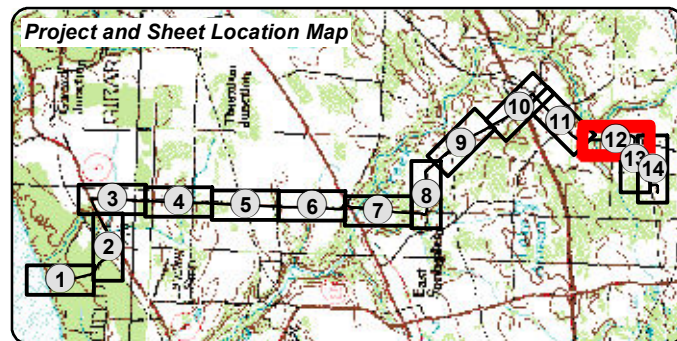
Prepared by: HDR Engineering, Inc. | January 2016



See Page



See Page



- Proposed Underground Cable Route
- Proposed AC Cable Route
- Proposed Underwater Cable Route
- Cable Route LOD
- Construction Laydown LOD
- Proposed Converter Station Site

- Wetlands**
- PUB
 - PSS
 - PFO
 - PEM

- Env. Field Survey Corridor**
- Wetland Shovel Test**
- Upland
 - Wetland
 - River | Stream
 - Pond

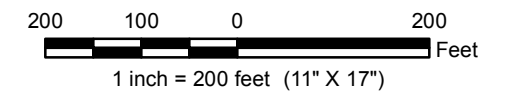
- US Highway
- US Route
- State Route
- Local Road
- Railroad
- PASDA River | Stream
- Contour (10ft.)

Map information was compiled from the best available public sources. No warranty is made for its accuracy and completeness.

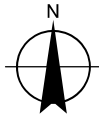
Document Path: N:\GIS2\Projects\Lake_Erie_Power_Corporation\211948_SubseaCable_SM_Task1\Map_Docs\Final\Environmental_Reports\Wetland_Waterbodies\LEPC_Appendix_A_EA_Alignment_Map_20160114.mxd

**ALIGNMENT MAPS
ERIE COUNTY, PENNSYLVANIA**

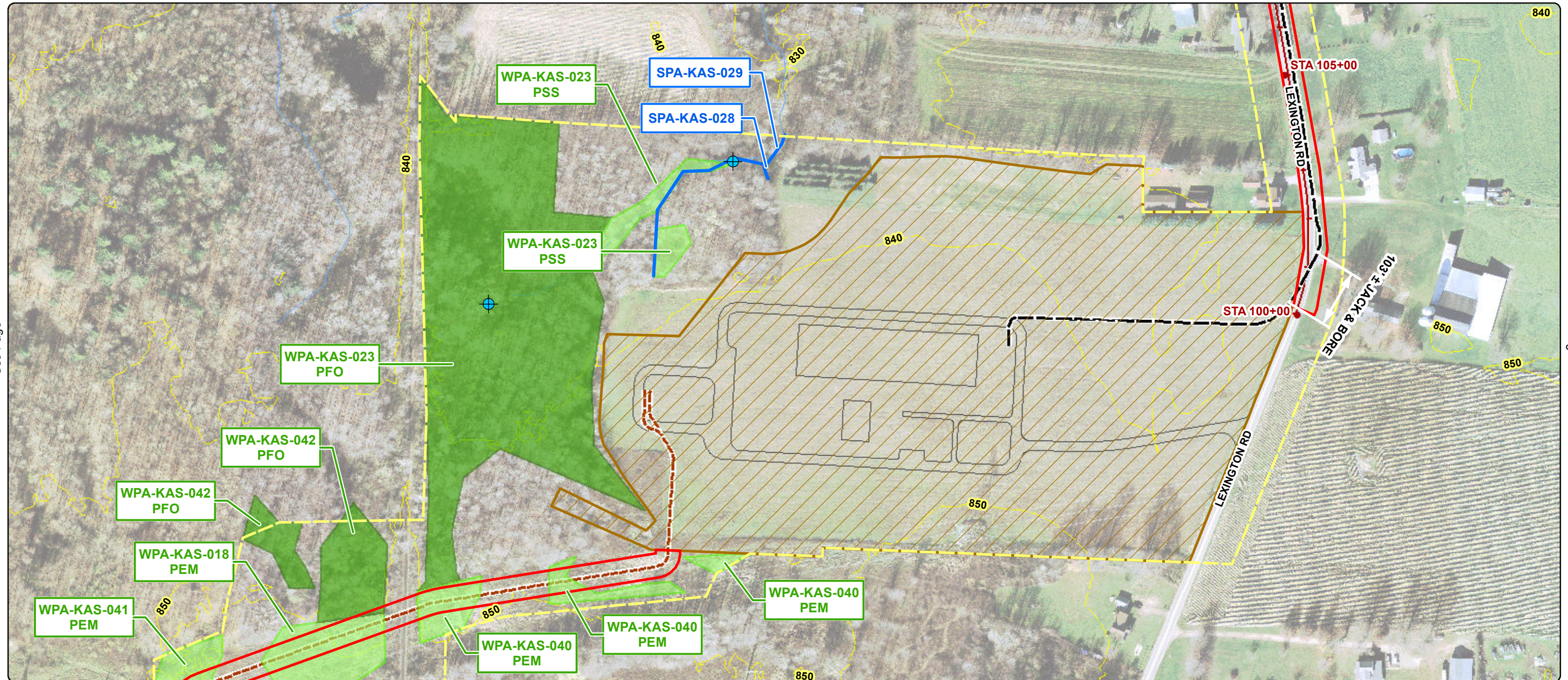
Page 12 of 14



Prepared by: HDR Engineering, Inc. | January 2016



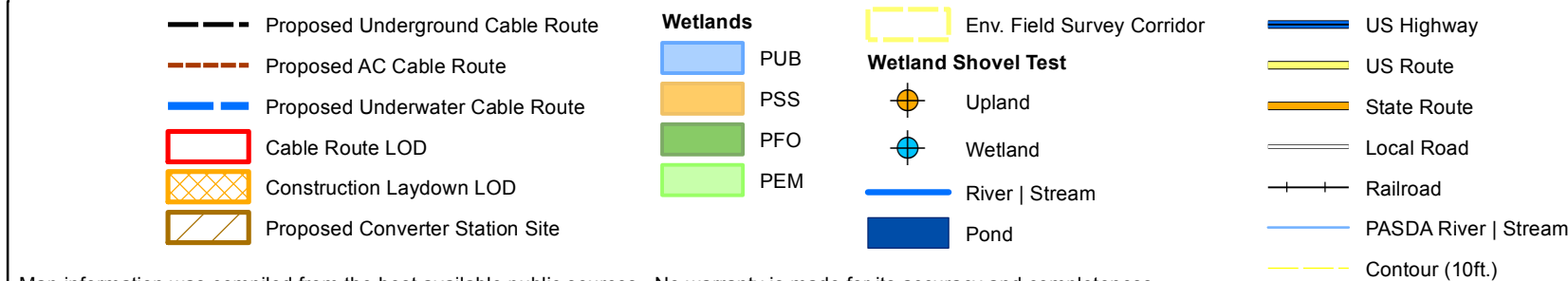
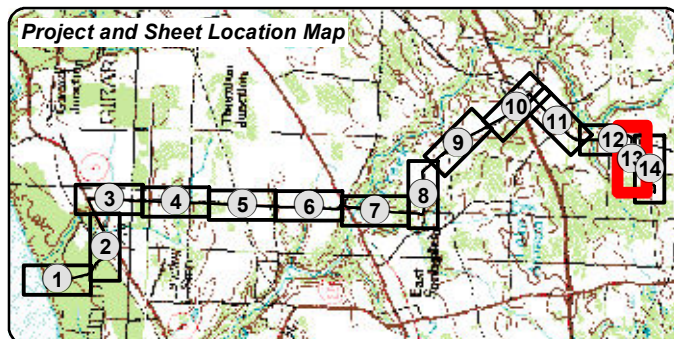
See Page



See Page

See Page 12

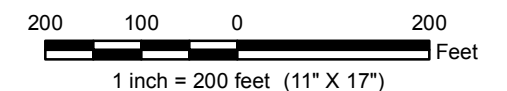
See Page 14

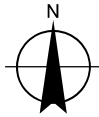


Map information was compiled from the best available public sources. No warranty is made for its accuracy and completeness.

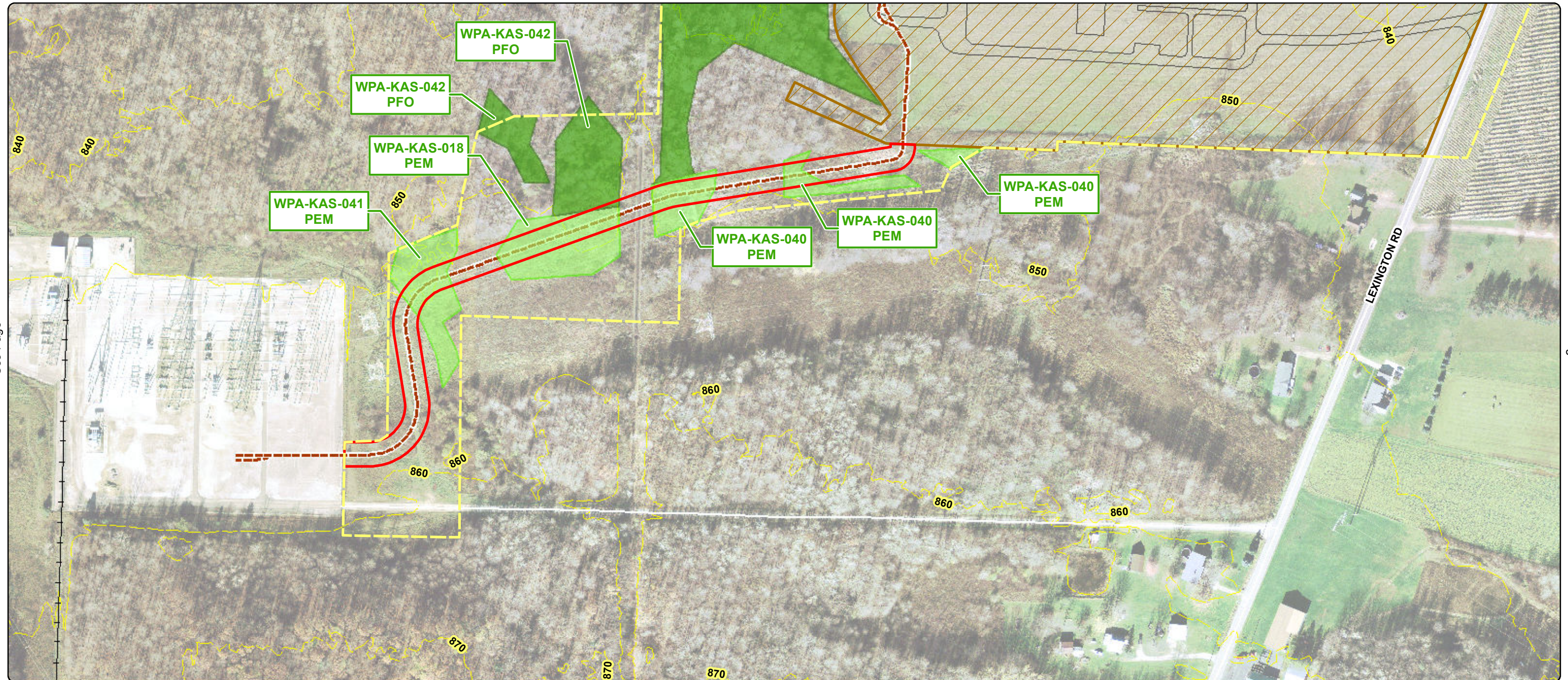
**ALIGNMENT MAPS
ERIE COUNTY, PENNSYLVANIA**

Page 13 of 14

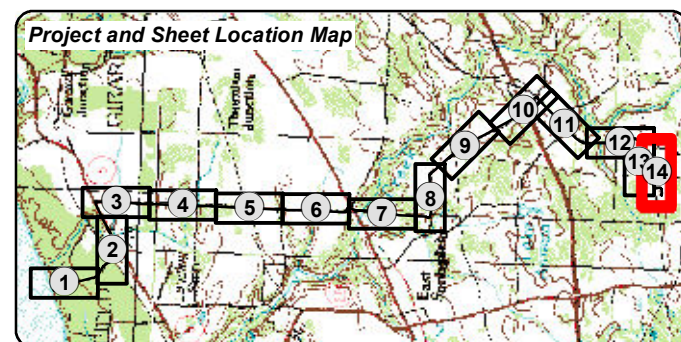




See Page 13



See Page



- Proposed Underground Cable Route
- Proposed AC Cable Route
- Proposed Underwater Cable Route
- Cable Route LOD
- Construction Laydown LOD
- Proposed Converter Station Site

- Wetlands**
- PUB
 - PSS
 - PFO
 - PEM

- Env. Field Survey Corridor**
- Wetland Shovel Test**
- Upland
 - Wetland
 - River | Stream
 - Pond

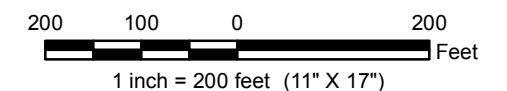
- US Highway
- US Route
- State Route
- Local Road
- Railroad
- PASDA River | Stream
- Contour (10ft.)

Map information was compiled from the best available public sources. No warranty is made for its accuracy and completeness.

Document Path: N:\GIS2\Projects\Lake_Erie_Power_Corporation\211948_SubseaCable_SM_Task1\Map_Docs\Final\Environmental_Reports\Wetland_Waterbodies\LEPC_Appendix_A_EA_Alignment_Map_20160114.mxd

**ALIGNMENT MAPS
ERIE COUNTY, PENNSYLVANIA**

Page 14 of 14



Prepared by: HDR Engineering, Inc. | January 2016