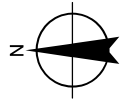


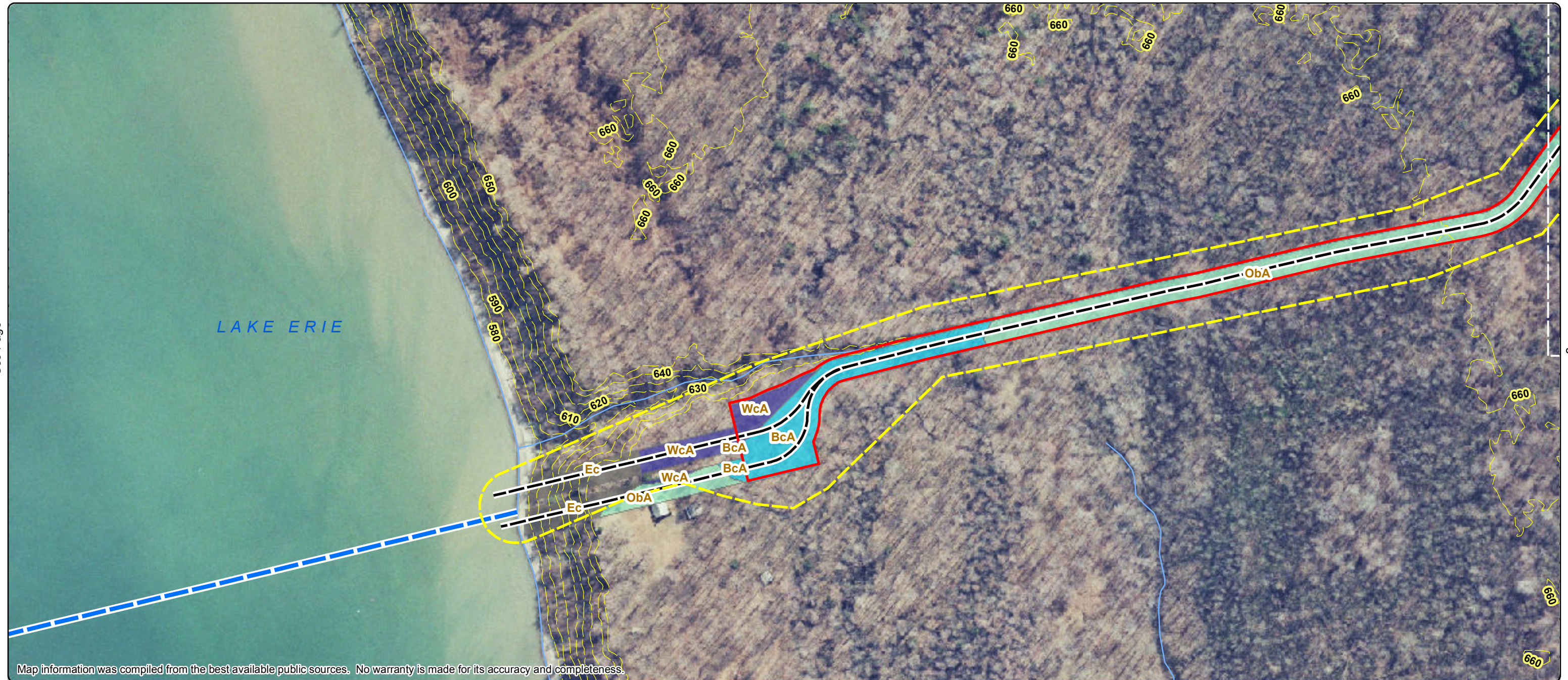
## **APPENDIX D**

### **UNDERGROUND SEGMENT – USDA SOILS MAPS**



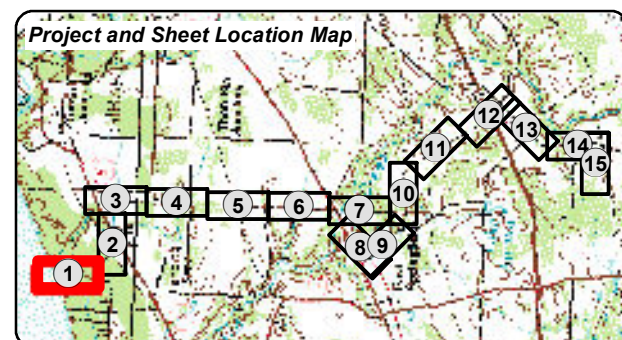


See Page



Map information was compiled from the best available public sources. No warranty is made for its accuracy and completeness.

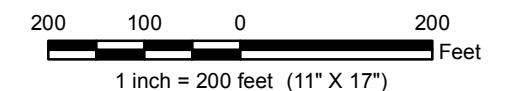
See Page



- |   |  |  |  |  |
|---|--|--|--|--|
| <ul style="list-style-type: none"><li>Proposed Underwater Cable Route</li><li>Option 1</li><li>Option 1A</li><li>Cable Route LOD</li><li>Construction Laydown LOD</li><li>Proposed Converter Station Site</li></ul> | <ul style="list-style-type: none"><li>Field Survey Corridor</li><li>Railroad</li><li>US Highway</li><li>US Route</li><li>State Route</li><li>Local Road</li><li>PASDA River   Stream</li><li>Contour (10ft.)</li></ul> | <b>USDA Soils</b> <ul style="list-style-type: none"><li>BcA - Berrien fine sandy loam, 0 to 2 percent slopes</li></ul> | <ul style="list-style-type: none"><li>Ec - Escarpments</li><li>ObA - Ottawa loamy fine sand, 0 to 2 percent slopes</li></ul> | <ul style="list-style-type: none"><li>WcA - Wauseon fine sandy loam, 0 to 2 percent slopes</li></ul> |
|---|--|--|--|--|

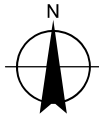
**USDA SOILS MAP  
ERIE COUNTY, PENNSYLVANIA**

Page 1 of 15

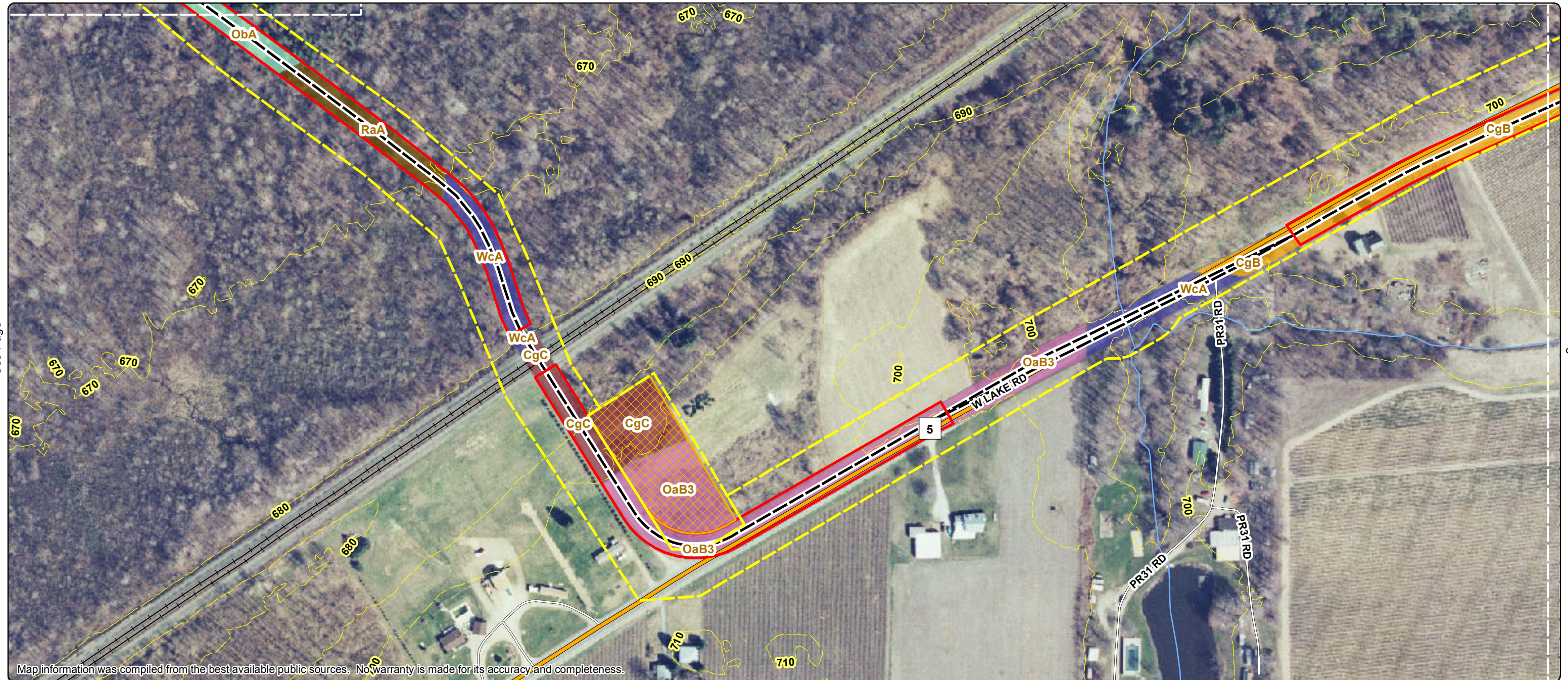


Prepared by: HDR Engineering, Inc. | May 2015



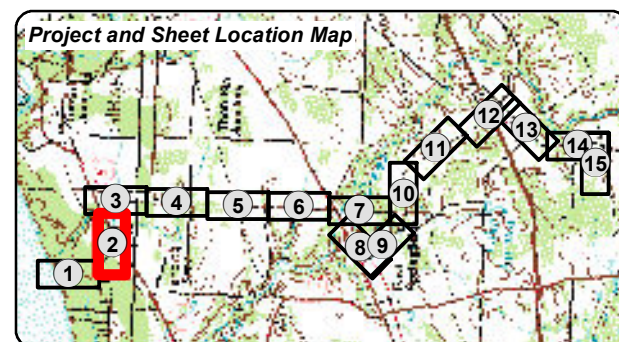


See Page 1



Map information was compiled from the best available public sources. No warranty is made for its accuracy and completeness.

See Page



- Proposed Underwater Cable Route
- Option 1
- Option 1A
- Cable Route LOD
- Construction Laydown LOD
- Proposed Converter Station Site

- Field Survey Corridor
- Railroad
- US Highway
- US Route
- State Route
- Local Road
- PASDA River | Stream
- Contour (10ft.)

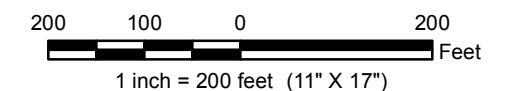
- USDA Soils**
- CgB - Conotton coarse sandy loam, 0 to 8 percent slopes

- CgC - Conotton coarse sandy loam, 8 to 15 percent slopes
- OaB3 - Ottawa fine sandy loam, 2 to 8 percent slopes, severely eroded

- ObA - Ottawa loamy fine sand, 0 to 2 percent slopes
- RaA - Rimer fine sandy loam, 0 to 2 percent slopes
- WcA - Wauseon fine sandy loam, 0 to 2 percent slopes

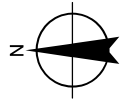
**USDA SOILS MAP  
ERIE COUNTY, PENNSYLVANIA**

Page 2 of 15



Prepared by: HDR Engineering, Inc. | May 2015



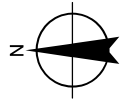


See Page

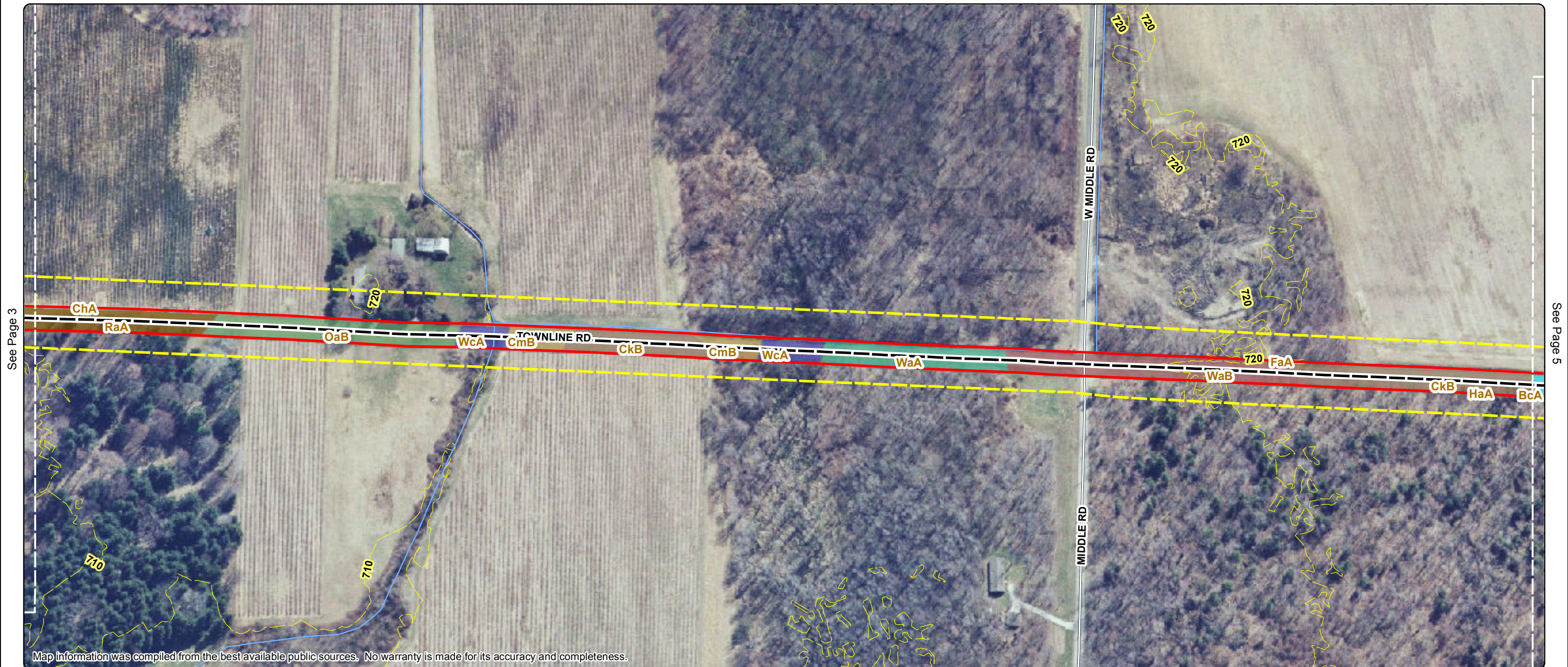
See Page





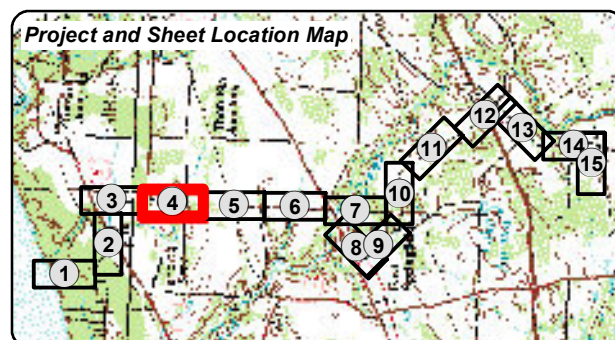


See Page



Map information was compiled from the best available public sources. No warranty is made for its accuracy and completeness.

See Page



- Proposed Underwater Cable Route
- Option 1
- Option 1A
- Cable Route LOD
- Construction Laydown LOD
- Proposed Converter Station Site

- Field Survey Corridor
- Railroad
- US Highway
- US Route
- State Route
- Local Road
- PASDA River | Stream
- Contour (10ft.)

USDA Soils

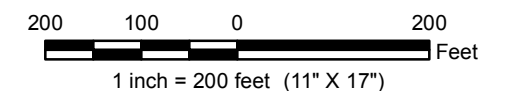
- BcA - Berrien fine sandy loam, 0 to 2 percent slopes
- ChA - Conotton gravelly loam, 0 to 3 percent slopes
- CkB - Conotton gravelly sandy loam, 3 to 8 percent slopes

- CmB - Conotton gravelly sandy loam, moderately well drained variant, 3 to 8 percent slopes
- FaA - Fredon loam, 0 to 3 percent slopes
- HaA - Halsey loam, 0 to 3 percent slopes
- OaB - Ottawa fine sandy loam, 2 to 8 percent slopes

- RaA - Rimer fine sandy loam, 0 to 2 percent slopes
- WaA - Wallington fine sandy loam, 0 to 2 percent slopes
- WaB - Wallington fine sandy loam, 2 to 8 percent slopes
- WcA - Wauseon fine sandy loam, 0 to 2 percent slopes

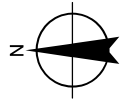
USDA SOILS MAP  
ERIE COUNTY, PENNSYLVANIA

Page 4 of 15

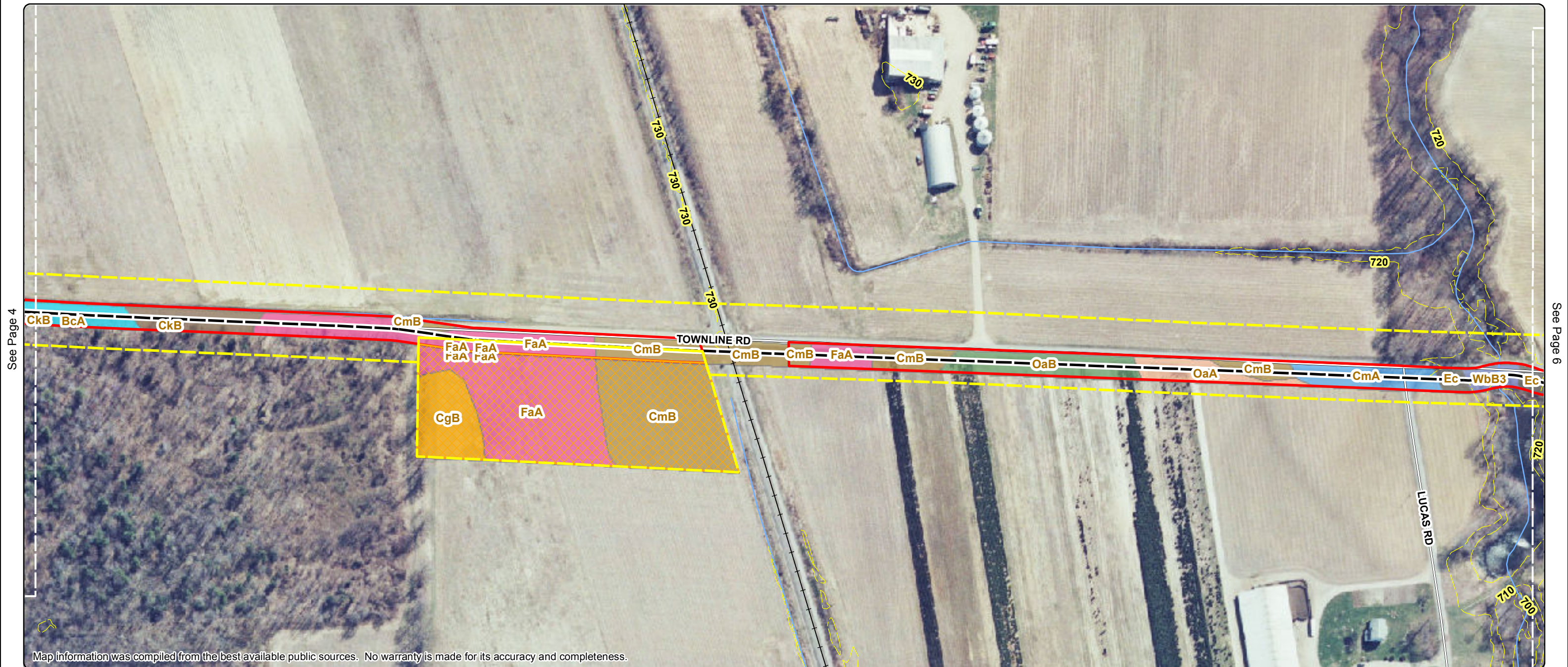


Prepared by: HDR Engineering, Inc. | May 2015





See Page

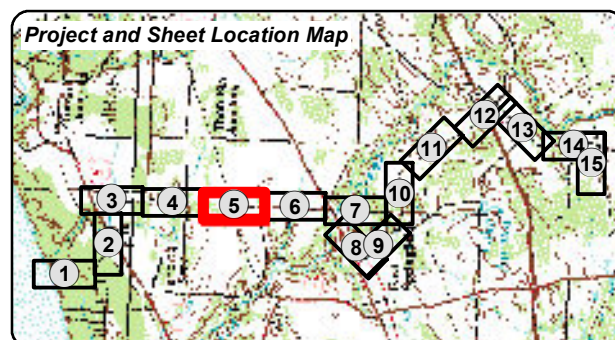


See Page 4

See Page 6

Map information was compiled from the best available public sources. No warranty is made for its accuracy and completeness.

See Page



- Proposed Underwater Cable Route
- Option 1
- Option 1A
- Cable Route LOD
- Construction Laydown LOD
- Proposed Converter Station Site

- Field Survey Corridor
- Railroad
- US Highway
- US Route
- State Route
- Local Road
- PASDA River | Stream
- Contour (10ft.)

USDA Soils

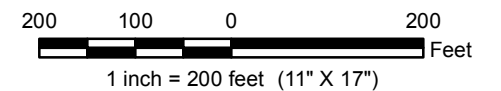
- BcA - Berrien fine sandy loam, 0 to 2 percent slopes
- CgB - Conotton coarse sandy loam, 0 to 8 percent slopes
- CkB - Conotton gravelly sandy loam, 3 to 8 percent slopes

- CmA - Conotton gravelly sandy loam, moderately well drained variant, 0 to 3 percent slopes
- CmB - Conotton gravelly sandy loam, moderately well drained variant, 3 to 8 percent slopes
- Ec - Escarpments

- FaA - Fredon loam, 0 to 3 percent slopes
- OaA - Ottawa fine sandy loam, 0 to 2 percent slopes
- OaB - Ottawa fine sandy loam, 2 to 8 percent slopes
- WbB3 - Wallington silt loam, 2 to 8 percent slopes, severely eroded

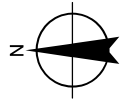
USDA SOILS MAP  
ERIE COUNTY, PENNSYLVANIA

Page 5 of 15



Prepared by: HDR Engineering, Inc. | May 2015



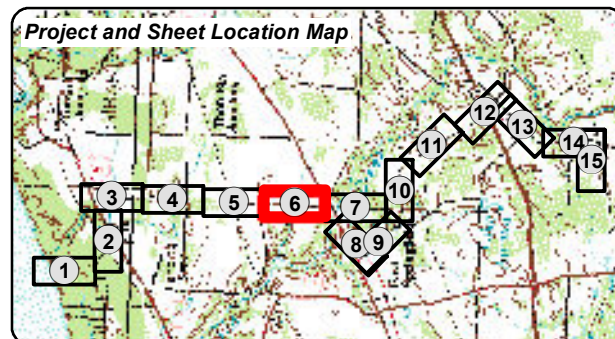


See Page



Map information was compiled from the best available public sources. No warranty is made for its accuracy and completeness.

See Page



- Proposed Underwater Cable Route
- Option 1
- Option 1A
- Cable Route LOD
- Construction Laydown LOD
- Proposed Converter Station Site

- Field Survey Corridor
- Railroad
- US Highway
- US Route
- State Route
- Local Road
- PASDA River | Stream
- Contour (10ft.)

USDA Soils

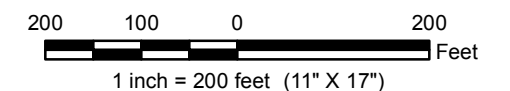
- CaB - Canadice silt loam, 2 to 8 percent slopes
- CgB - Conotton coarse sandy loam, 0 to 8 percent slopes
- ChB - Conotton gravelly loam, 3 to 8 percent slopes

- CkB - Conotton gravelly sandy loam, 3 to 8 percent slopes
- CkD - Conotton gravelly sandy loam, 15 to 25 percent slopes

- CmA - Conotton gravelly sandy loam, moderately well drained variant, 0 to 3 percent slopes
- Ec - Escarpments
- FaB - Fredon loam, 3 to 8 percent slopes
- OaB - Ottawa fine sandy loam, 2 to 8 percent slopes

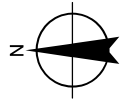
USDA SOILS MAP  
ERIE COUNTY, PENNSYLVANIA

Page 6 of 15



Prepared by: HDR Engineering, Inc. | May 2015



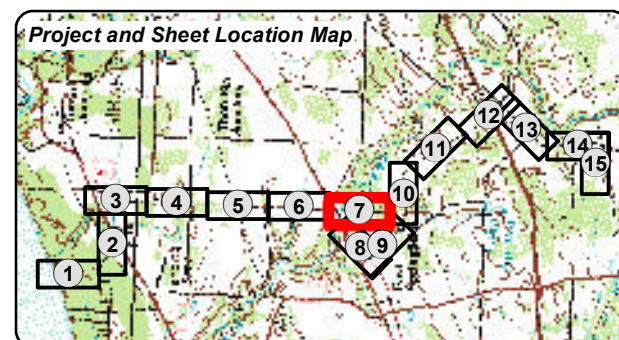


See Page



Map information was compiled from the best available public sources. No warranty is made for its accuracy and completeness.

See Page 8



- Proposed Underwater Cable Route
- Option 1
- Option 1A
- Cable Route LOD
- Construction Laydown LOD
- Proposed Converter Station Site

- Field Survey Corridor
- Railroad
- US Highway
- US Route
- State Route
- Local Road
- PASDA River | Stream
- Contour (10ft.)

#### USDA Soils

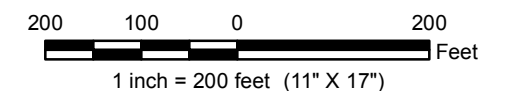
- BcB - Berrien fine sandy loam, 2 to 8 percent slopes
- CaB - Canadice silt loam, 2 to 8 percent slopes
- CbC - Caneadea silt loam, 8 to 15 percent slopes
- CgB - Conotton coarse sandy loam, 0 to 8 percent slopes

- ChB - Conotton gravelly loam, 3 to 8 percent slopes
- CkB - Conotton gravelly sandy loam, 3 to 8 percent slopes
- CmB - Conotton gravelly sandy loam, moderately well drained variant, 3 to 8 percent slopes
- Ec - Escarpments

- FaA - Fredon loam, 0 to 3 percent slopes
- LdB - Lobdell silt loam, high bottom, 3 to 6 percent slopes
- W - Water
- WdA - Wayland silt loam, 0 to 3 percent slopes

#### USDA SOILS MAP ERIE COUNTY, PENNSYLVANIA

Page 7 of 15

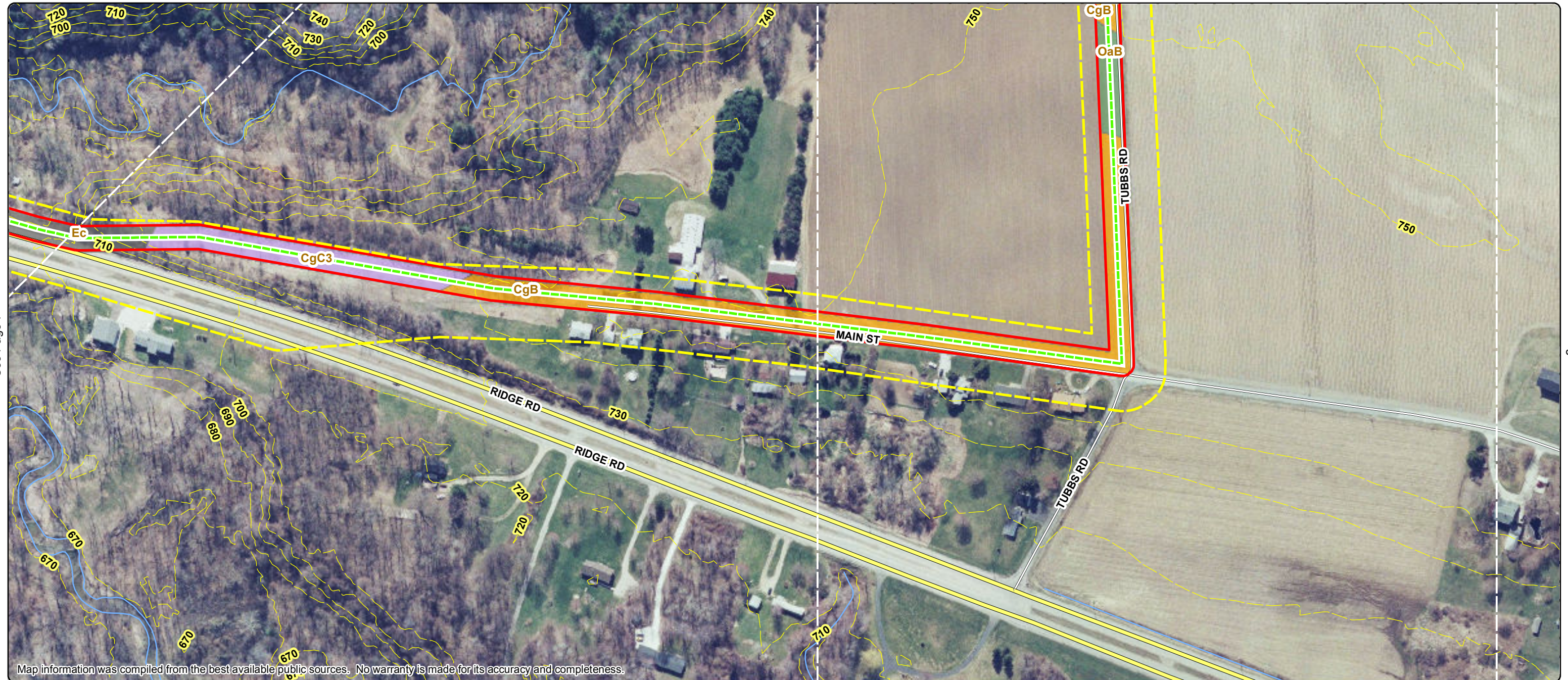


Prepared by: HDR Engineering, Inc. | May 2015



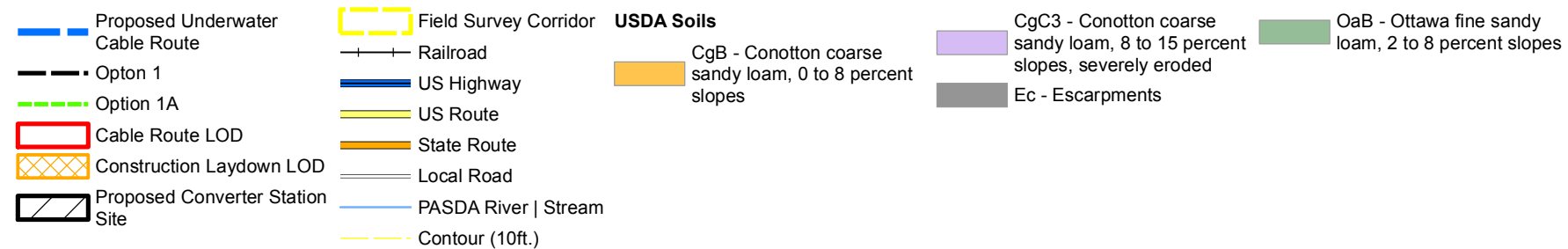
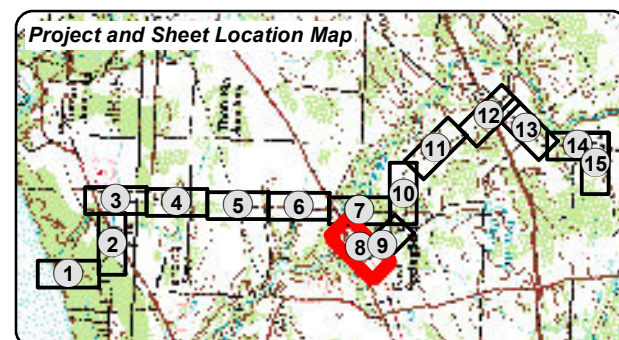


See Page 9



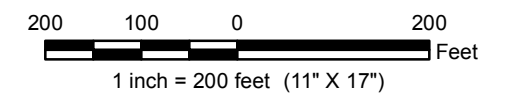
Map information was compiled from the best available public sources. No warranty is made for its accuracy and completeness.

See Page



**USDA SOILS MAP  
ERIE COUNTY, PENNSYLVANIA**

Page 8 of 15



Prepared by: HDR Engineering, Inc. | May 2015



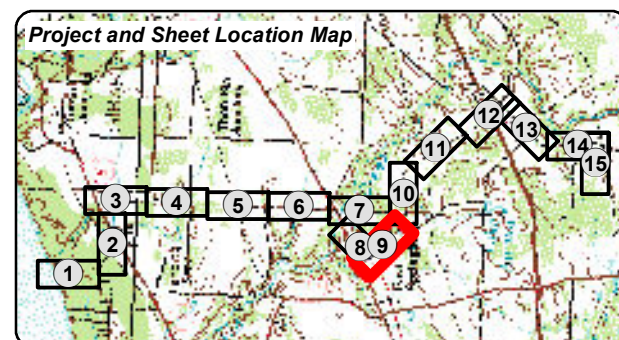


See Page



Map information was compiled from the best available public sources. No warranty is made for its accuracy and completeness.

See Page



- Proposed Underwater Cable Route
- Option 1
- Option 1A
- Cable Route LOD
- Construction Laydown LOD
- Proposed Converter Station Site

- Field Survey Corridor
- Railroad
- US Highway
- US Route
- State Route
- Local Road
- PASDA River | Stream
- Contour (10ft.)

- USDA Soils**
- CgB - Conotton coarse sandy loam, 0 to 8 percent slopes

- CmB - Conotton gravelly sandy loam, moderately well drained variant, 3 to 8 percent slopes
- Ec - Escarpments

- OaB - Ottawa fine sandy loam, 2 to 8 percent slopes
- WdA - Wayland silt loam, 0 to 3 percent slopes

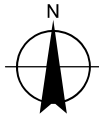
**USDA SOILS MAP  
ERIE COUNTY, PENNSYLVANIA**

Page 9 of 15

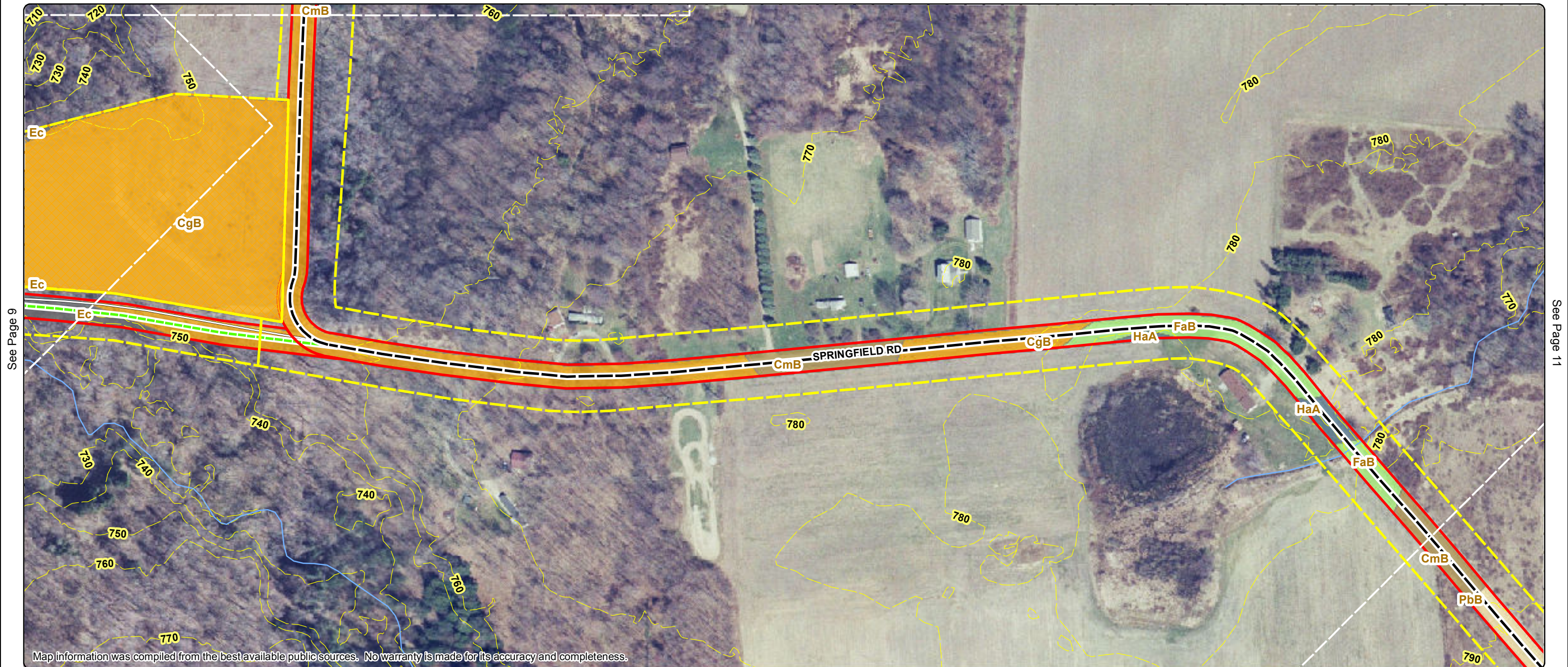


Prepared by: HDR Engineering, Inc. | May 2015



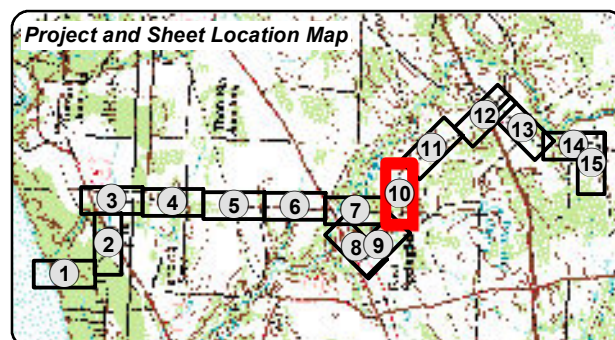


See Page 7



Map information was compiled from the best available public sources. No warranty is made for its accuracy and completeness.

See Page



- Proposed Underwater Cable Route
- Option 1
- Option 1A
- Cable Route LOD
- Construction Laydown LOD
- Proposed Converter Station Site

- Field Survey Corridor
- Railroad
- US Highway
- US Route
- State Route
- Local Road
- PASDA River | Stream
- Contour (10ft.)

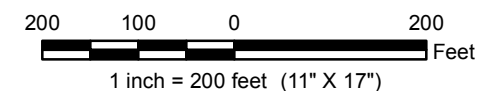
**USDA Soils**  
CgB - Conotton coarse sandy loam, 0 to 8 percent slopes

CmB - Conotton gravelly sandy loam, moderately well drained variant, 3 to 8 percent slopes  
Ec - Escarpments

FaB - Fredon loam, 3 to 8 percent slopes  
HaA - Halsey loam, 0 to 3 percent slopes  
PbB - Platea silt loam, 2 to 8 percent slopes

**USDA SOILS MAP  
ERIE COUNTY, PENNSYLVANIA**

Page 10 of 15



Prepared by: HDR Engineering, Inc. | May 2015





See Page

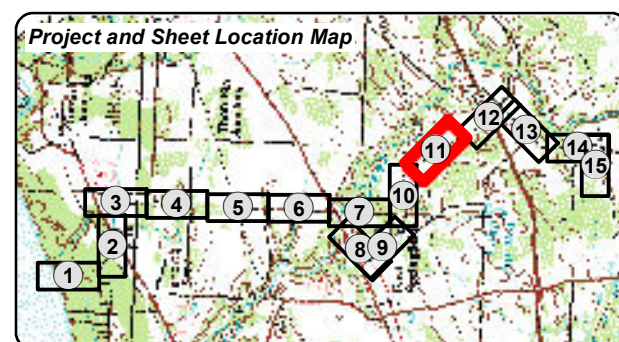
See Page 10



See Page 12

Map information was compiled from the best available public sources. No warranty is made for its accuracy and completeness.

See Page



- Proposed Underwater Cable Route
- Option 1
- Option 1A
- Cable Route LOD
- Construction Laydown LOD
- Proposed Converter Station Site

- Field Survey Corridor
- Railroad
- US Highway
- US Route
- State Route
- Local Road
- PASDA River | Stream
- Contour (10ft.)

- USDA Soils**
- CmB - Conotton gravelly sandy loam, moderately well drained variant, 3 to 8 percent slopes

- FaB - Fredon loam, 3 to 8 percent slopes
- PbB - Platea silt loam, 2 to 8 percent slopes

- WaA - Wallington fine sandy loam, 0 to 2 percent slopes

**USDA SOILS MAP  
ERIE COUNTY, PENNSYLVANIA**

Page 11 of 15

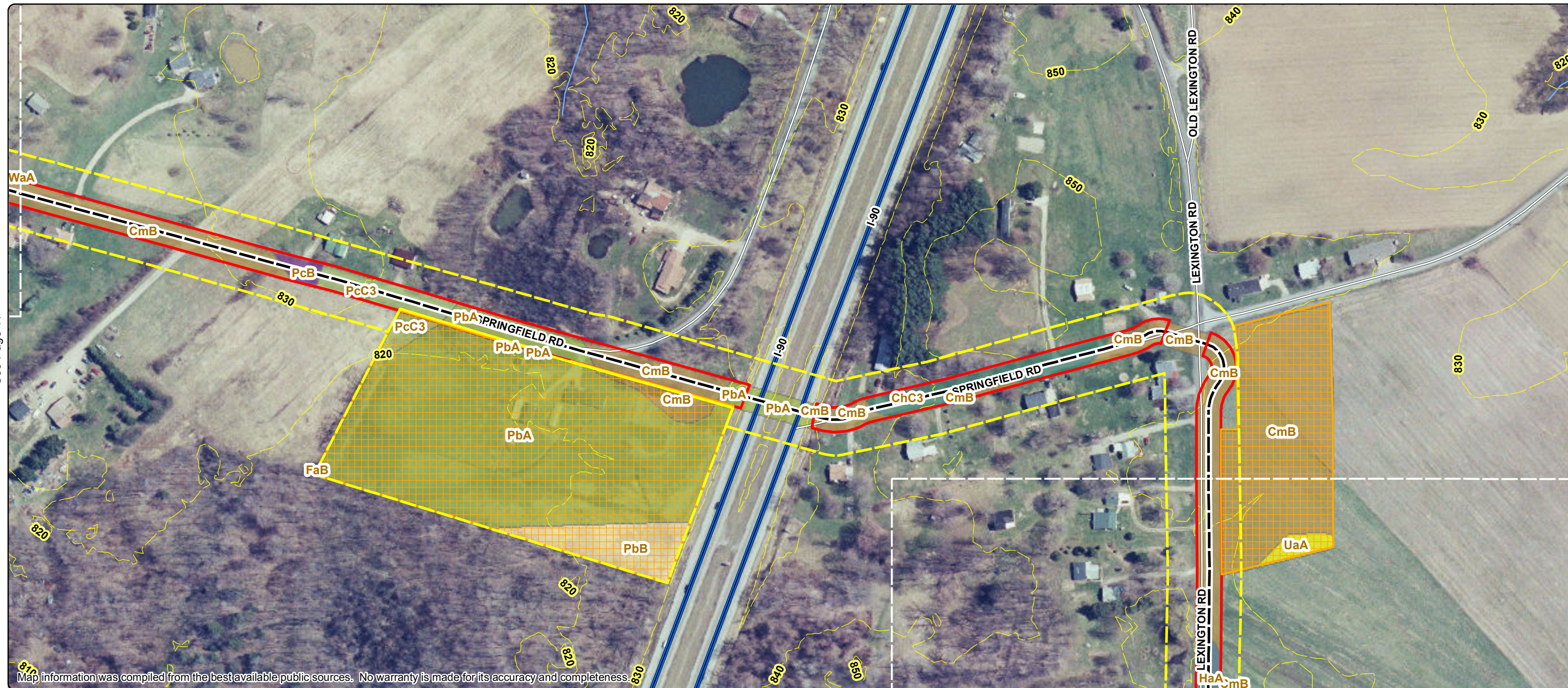


Prepared by: HDR Engineering, Inc. | May 2015



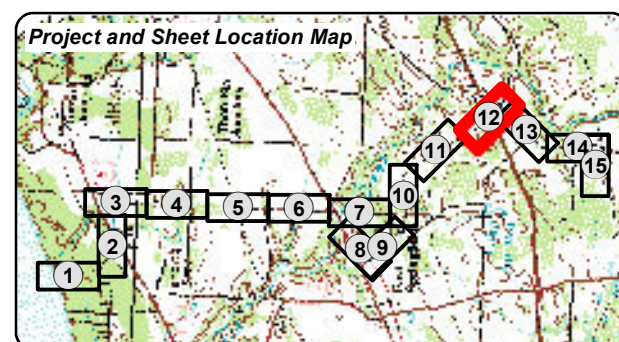


See Page



Map information was compiled from the best available public sources. No warranty is made for its accuracy and completeness.

See Page 13



- Proposed Underwater Cable Route
- Option 1
- Option 1A
- Cable Route LOD
- Construction Laydown LOD
- Proposed Converter Station Site

- Field Survey Corridor
- Railroad
- US Highway
- US Route
- State Route
- Local Road
- PASDA River | Stream
- Contour (10ft.)

- USDA Soils**
- ChC3 - Conotton gravelly loam, 8 to 15 percent slopes, severely eroded
  - CmB - Conotton gravelly sandy loam, moderately well drained variant, 3 to 8 percent slopes
  - FaB - Fredon loam, 3 to 8 percent slopes

- HaA - Halsey loam, 0 to 3 percent slopes
- PbA - Platea silt loam, 0 to 2 percent slopes
- PbB - Platea silt loam, 2 to 8 percent slopes
- PcB - Platea silt loam, moderately well drained variant, 2 to 8 percent slopes

- PcC3 - Platea silt loam, moderately well drained variant, 8 to 15 percent slopes, severely eroded
- UaA - Unadilla fine sandy loam, 0 to 3 percent slopes
- WaA - Wallington fine sandy loam, 0 to 2 percent slopes

**USDA SOILS MAP  
ERIE COUNTY, PENNSYLVANIA**

Page 12 of 15



Prepared by: HDR Engineering, Inc. | May 2015



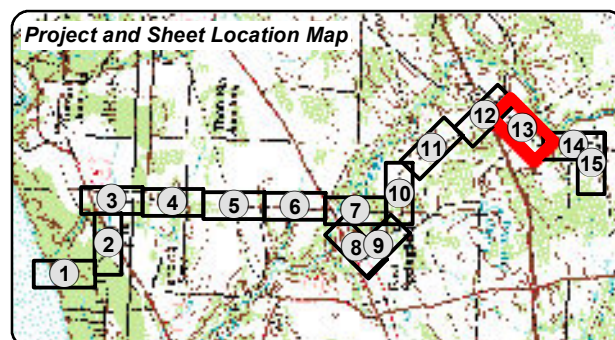


See Page



Map information was compiled from the best available public sources. No warranty is made for its accuracy and completeness.

See Page



- Proposed Underwater Cable Route
- Option 1
- Option 1A
- Cable Route LOD
- Construction Laydown LOD
- Proposed Converter Station Site

- Field Survey Corridor
- Railroad
- US Highway
- US Route
- State Route
- Local Road
- PASDA River | Stream
- Contour (10ft.)

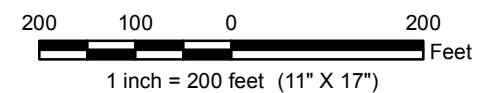
- USDA Soils**
- CgB - Conotton coarse sandy loam, 0 to 8 percent slopes

- CkD - Conotton gravelly sandy loam, 15 to 25 percent slopes

- CmB - Conotton gravelly sandy loam, moderately well drained variant, 3 to 8 percent slopes
- HaA - Halsey loam, 0 to 3 percent slopes
- UaA - Unadilla fine sandy loam, 0 to 3 percent slopes

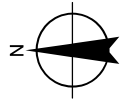
**USDA SOILS MAP  
ERIE COUNTY, PENNSYLVANIA**

Page 13 of 15



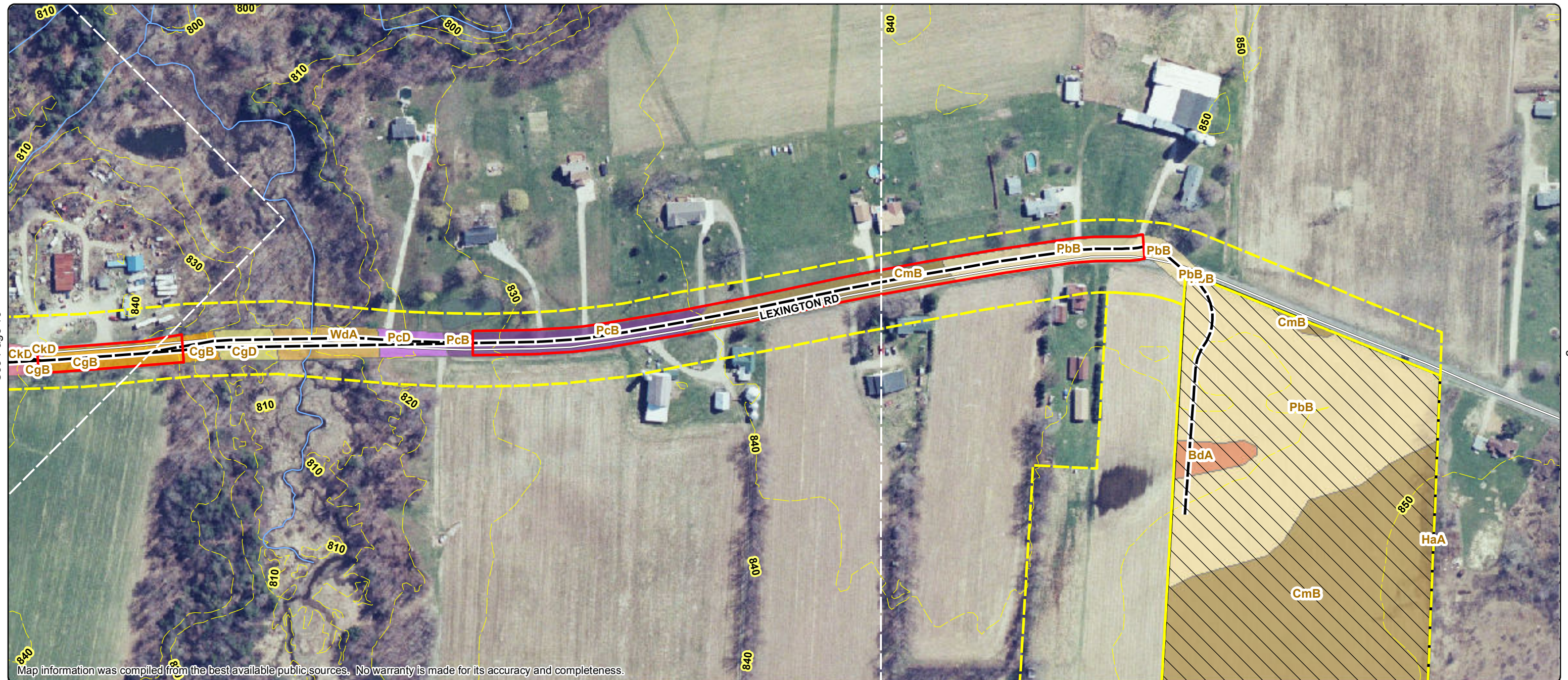
Prepared by: HDR Engineering, Inc. | May 2015





See Page

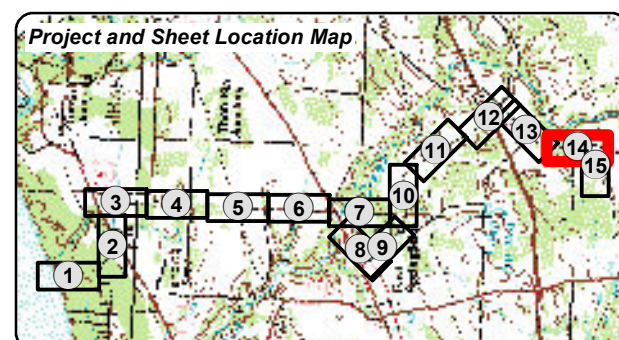
See Page 13



See Page

Map information was compiled from the best available public sources. No warranty is made for its accuracy and completeness.

See Page 15



- Proposed Underwater Cable Route
- Option 1
- Option 1A
- Cable Route LOD
- Construction Laydown LOD
- Proposed Converter Station Site

- Field Survey Corridor
- Railroad
- US Highway
- US Route
- State Route
- Local Road
- PASDA River | Stream
- Contour (10ft.)

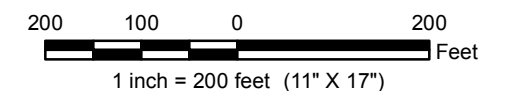
- USDA Soils**
- BdA - Birdsall silt loam, 0 to 2 percent slopes
  - CgB - Conotton coarse sandy loam, 0 to 8 percent slopes
  - CgD - Conotton coarse sandy loam, 15 to 25 percent slopes

- CkD - Conotton gravelly sandy loam, 15 to 25 percent slopes
- CmB - Conotton gravelly sandy loam, moderately well drained variant, 3 to 8 percent slopes
- HaA - Halsey loam, 0 to 3 percent slopes
- PbB - Platea silt loam, 2 to 8 percent slopes

- PcB - Platea silt loam, moderately well drained variant, 2 to 8 percent slopes
- PcD - Platea silt loam, moderately well drained variant, 15 to 25 percent slopes
- WdA - Wayland silt loam, 0 to 3 percent slopes

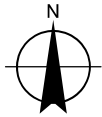
**USDA SOILS MAP  
ERIE COUNTY, PENNSYLVANIA**

Page 14 of 15

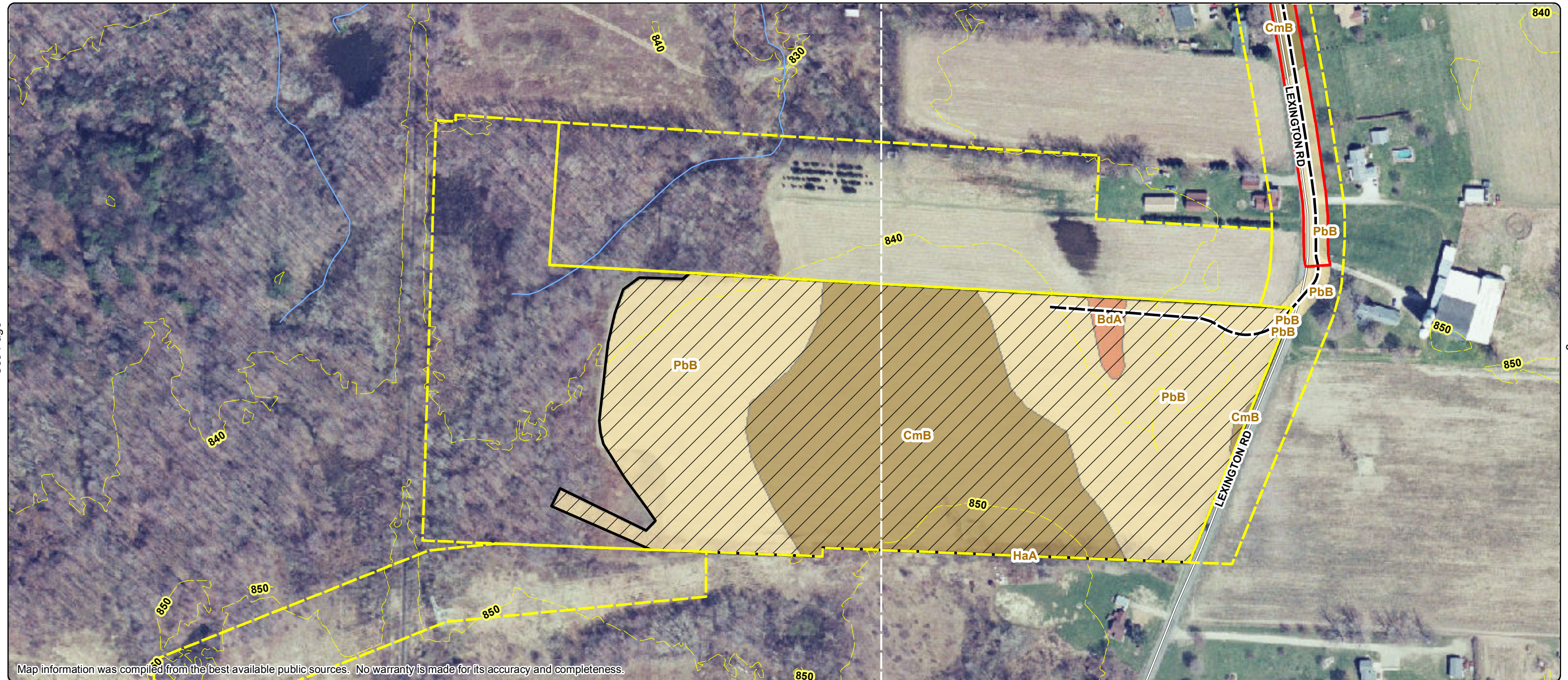


Prepared by: HDR Engineering, Inc. | May 2015



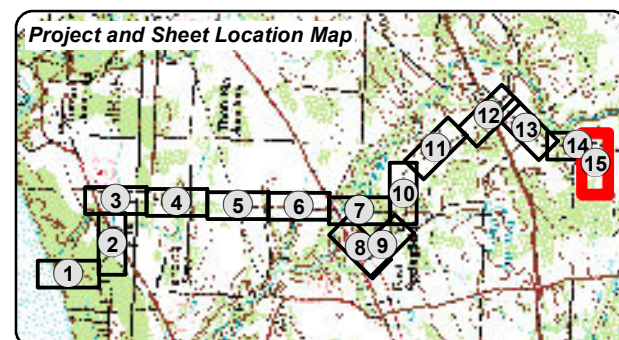


See Page



Map information was compiled from the best available public sources. No warranty is made for its accuracy and completeness.

See Page



- Proposed Underwater Cable Route
- Option 1
- Option 1A
- Cable Route LOD
- Construction Laydown LOD
- Proposed Converter Station Site

- Field Survey Corridor
- Railroad
- US Highway
- US Route
- State Route
- Local Road
- PASDA River | Stream
- Contour (10ft.)

USDA Soils

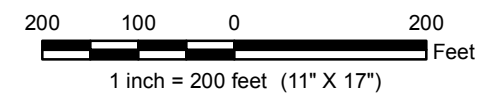
BdA - Birdsall silt loam, 0 to 2 percent slopes

CmB - Conotton gravelly sandy loam, moderately well drained variant, 3 to 8 percent slopes

HaA - Halsey loam, 0 to 3 percent slopes  
PbB - Platea silt loam, 2 to 8 percent slopes

USDA SOILS MAP  
ERIE COUNTY, PENNSYLVANIA

Page 15 of 15



Prepared by: HDR Engineering, Inc. | May 2015